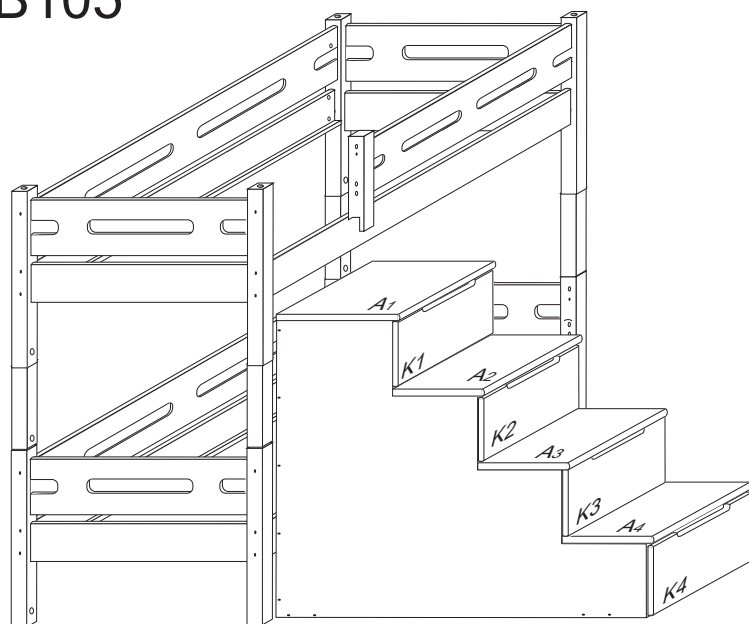


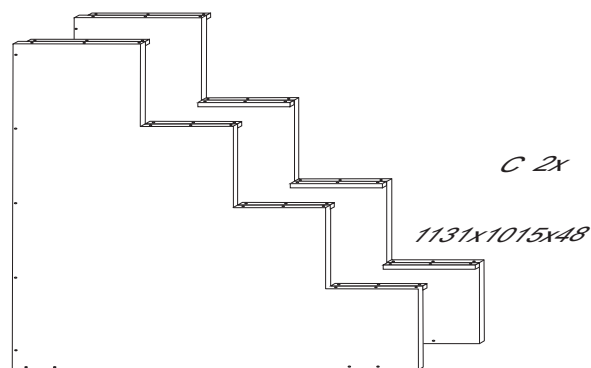
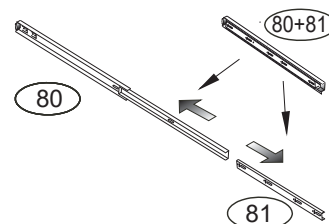
DOMINO BUBLINY

č. DB105

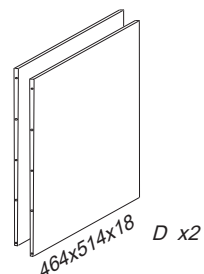


	3 x1	4 x1	6 x70	21 x8	22 x26	23 x18
	č.3	č.4	8x35mm	3x16mm	3,5x16mm	3,5x12mm
27 x4	61 x20	60 x2	68 x18	70 x50	71 x16	
4x30mm	DU 2	15mm	12mm	5x40mm	7x50mm	
80+81 x1	82+83 x1	84+85 x1	87 x16	96 x4		
355mm	600mm	650mm				

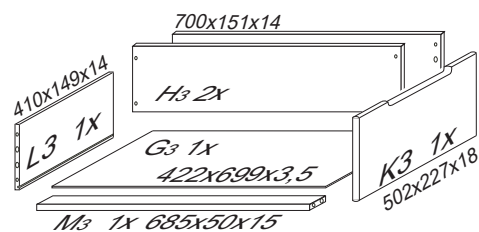
1/4



1131x1015x48



464x514x18 D 2x



410x149x14 L3 1x

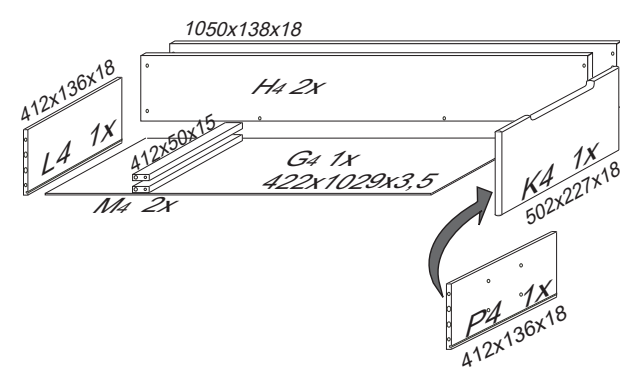
700x151x14 H3 2x

G3 1x

422x699x3,5

K3 1x 502x227x18

M3 1x 685x50x15



412x136x18 L4 1x

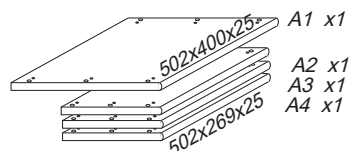
1050x138x18 H4 2x

G4 1x

422x1029x3,5

K4 1x 502x227x18

P4 1x 412x136x18

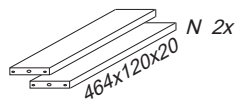


A1 x1

A2 x1

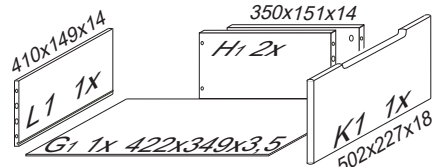
A3 x1

A4 x1



N 2x

464x120x20



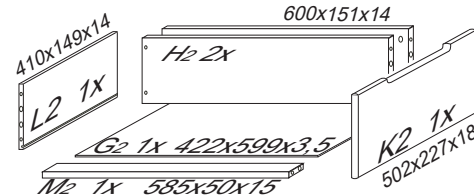
410x149x14 L1 1x

350x151x14 H1 2x

G1 1x

422x349x3,5

K1 1x 502x227x18



410x149x14 L2 1x

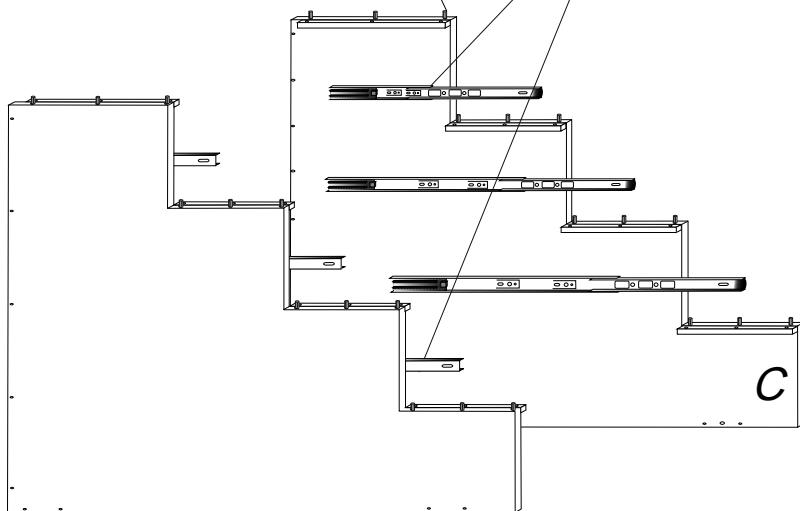
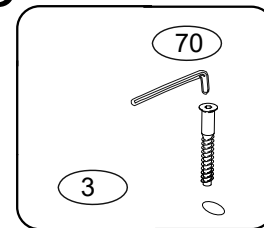
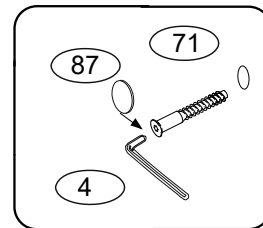
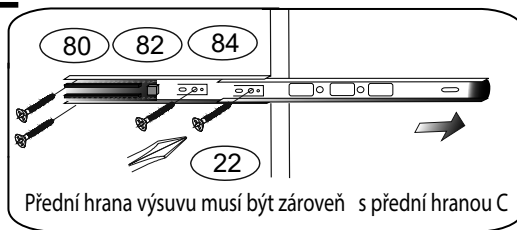
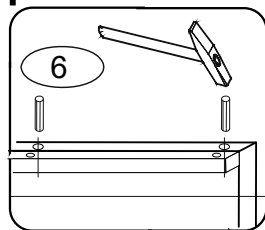
600x151x14 H2 2x

G2 1x

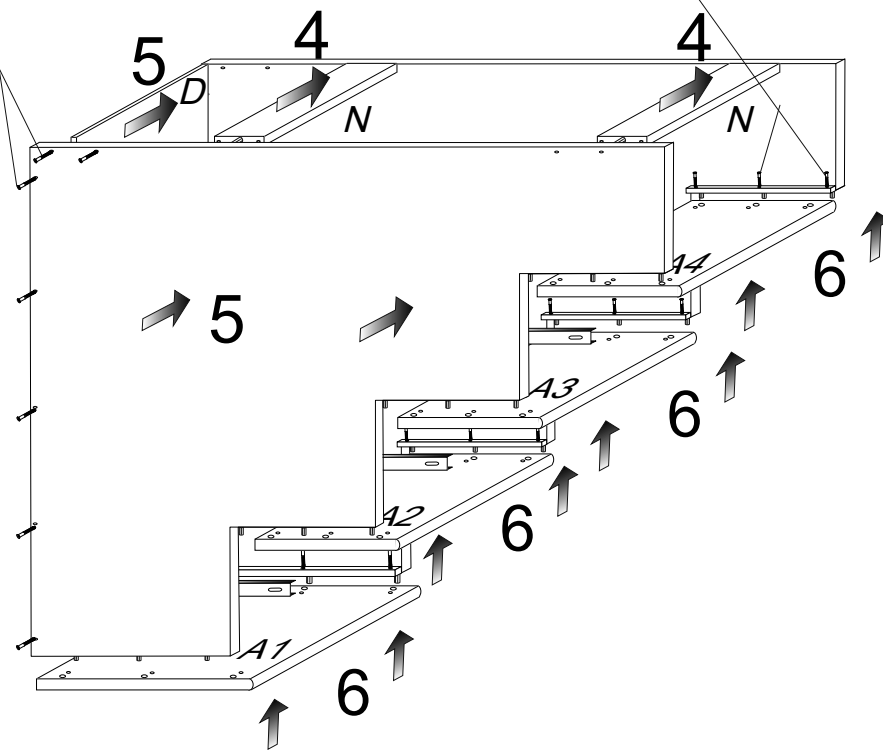
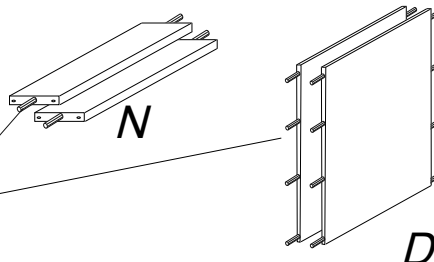
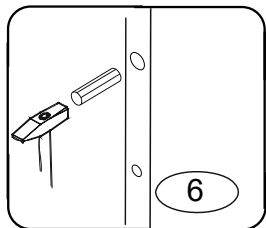
422x599x3,5

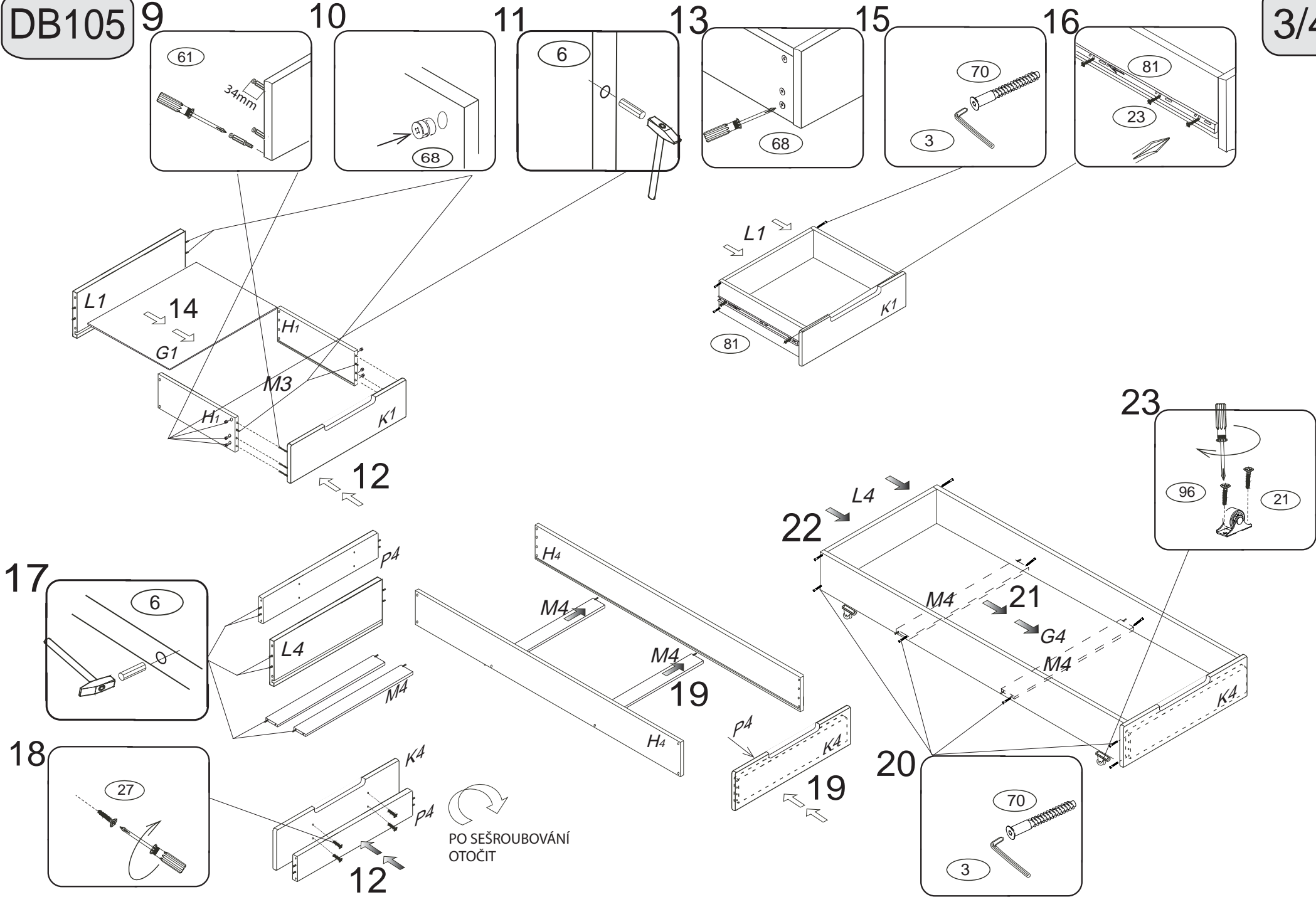
K2 1x 502x227x18

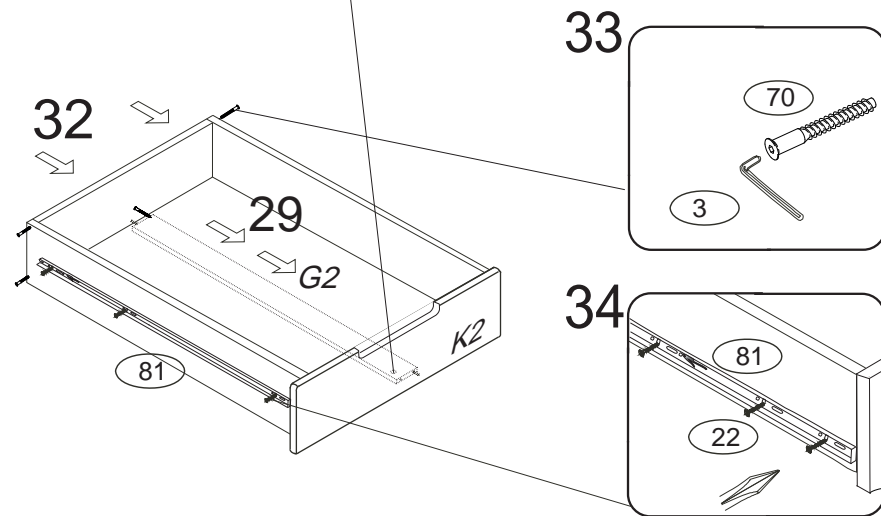
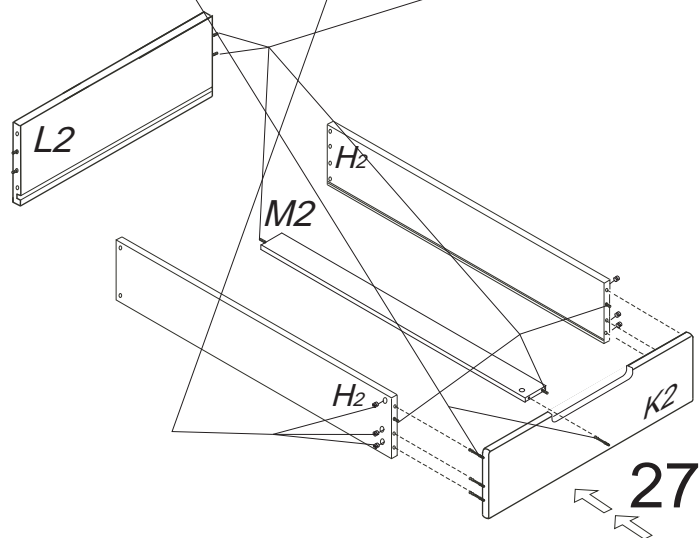
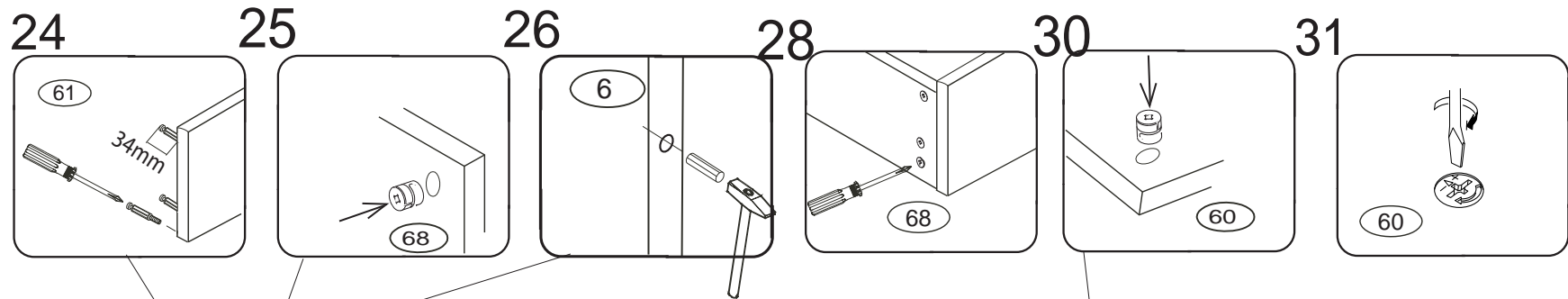
M2 1x 585x50x15



Kolíky vždy narazte nejprve do otvorů ve hranách dílců, je nutné je zarazit se stejným přesahem. V případě, že některý kolík přesahuje, je nutné jej zakrátit. Dílce srážejte kladivem pouze přes dřevěnou podložku.







35

Obdobně jako zásuvku č.2 sestavte zásuvku č.3

