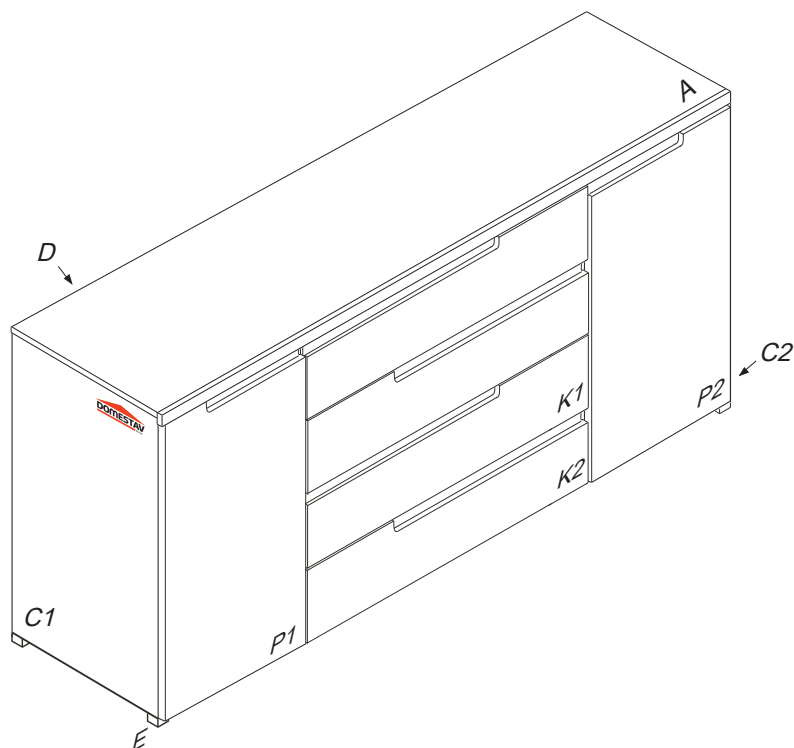


# KOMODA KOMBINOVANÁ č.F152

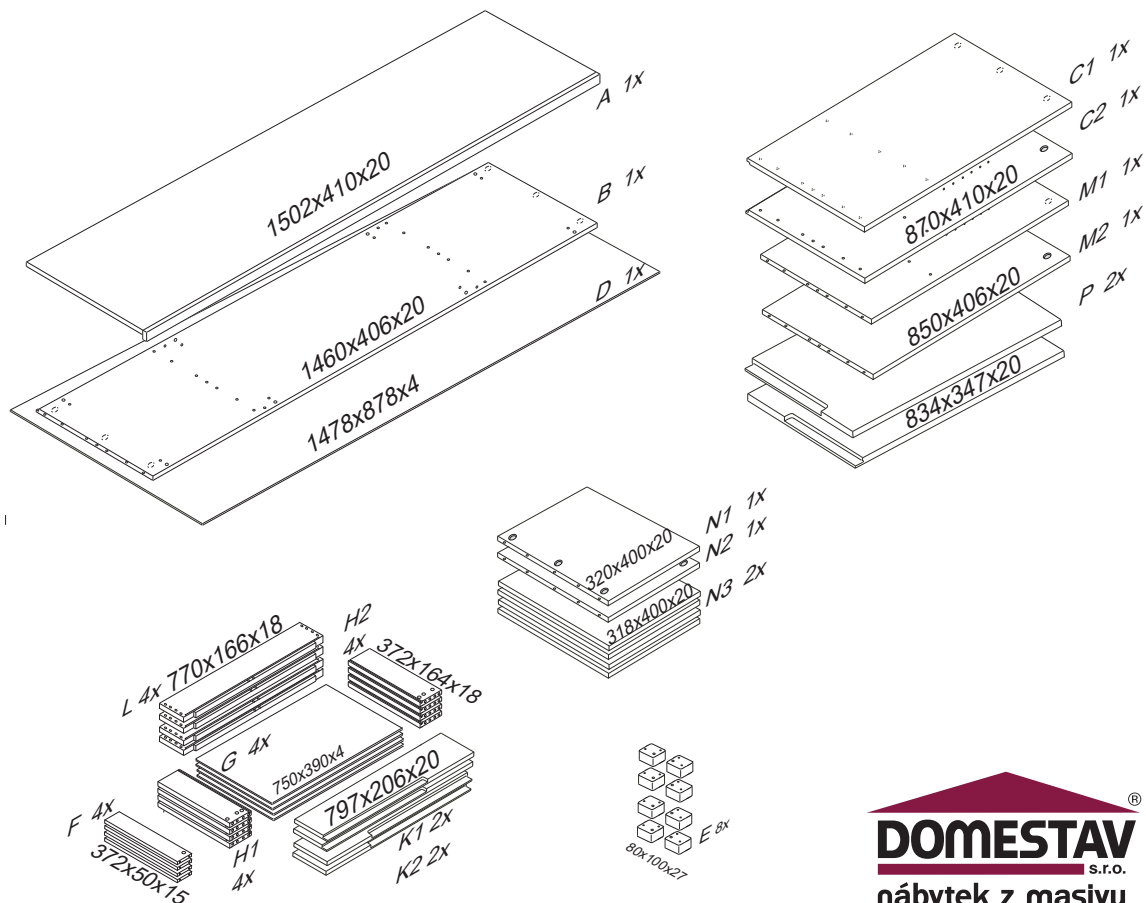
840x1502x430



Kolíky vždy narazte nejprve do otvorů ve hranách dílců, je nutné je zarazit se stejným přesahem. V případě, že některý kolík přesahuje, je nutné jej zakrátit. Dílce srážejte kladivem pouze přes dřevěnou podložku.

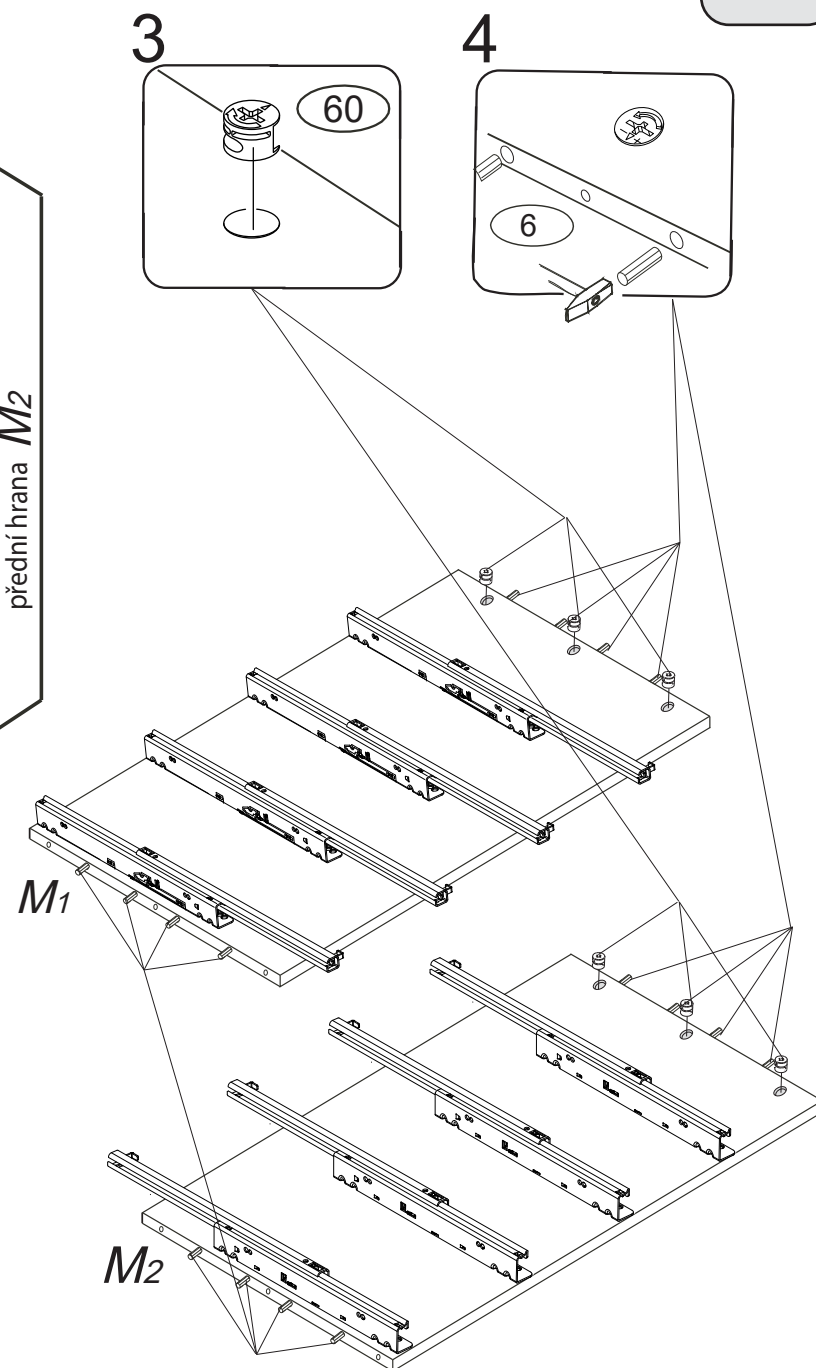
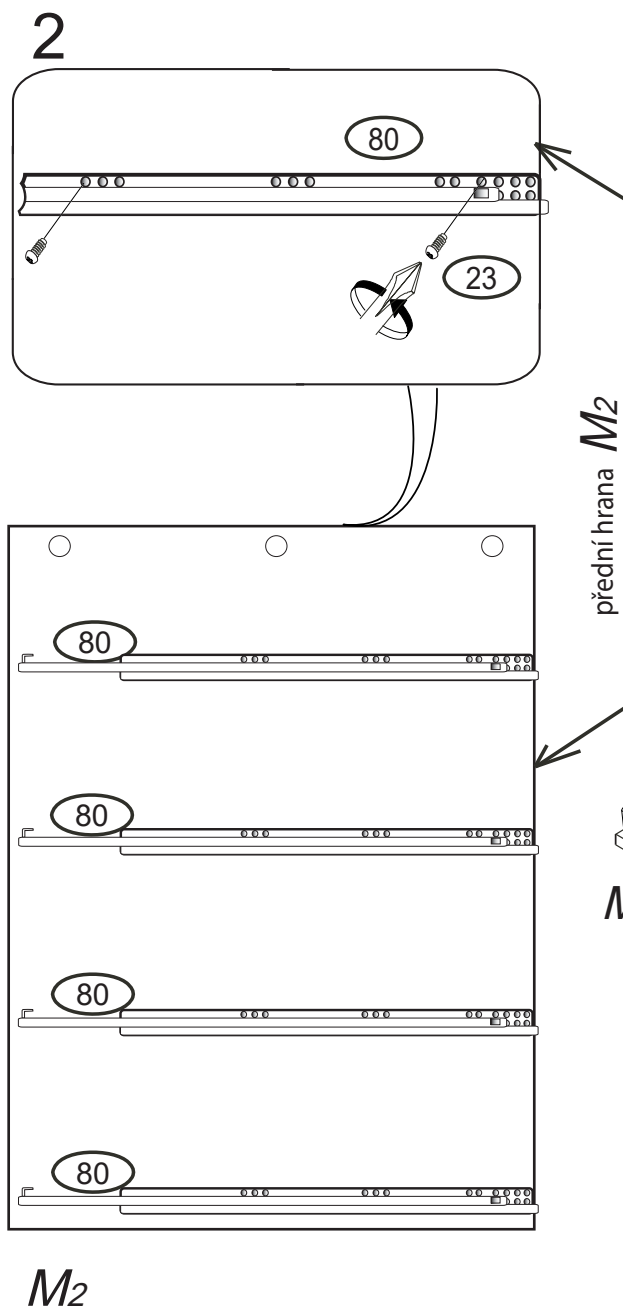
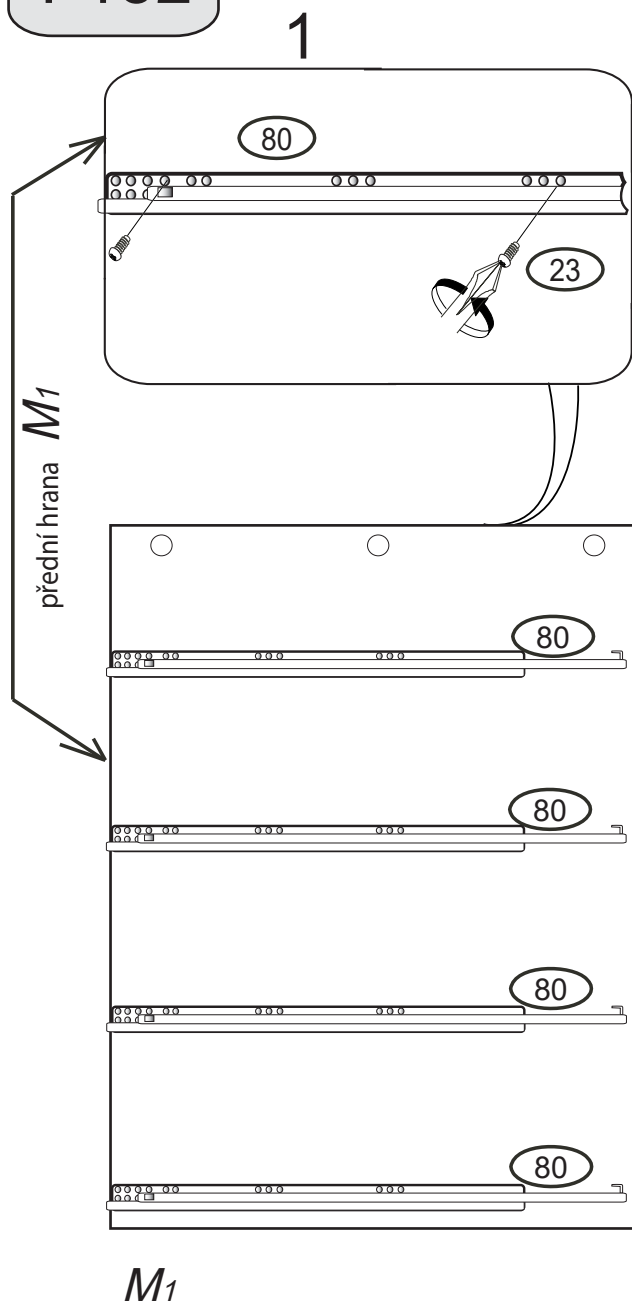
	3 x1 	4 x1 	6 x80 	22 x24 	23 x16 	24 x8 
	3mm	4mm	8x35mm	3,5x16mm	EU 6x16mm	EU 6x16mm
	60 x52 	61 x52 	67 x6 	70 x36 	71 x12 	
	15mm	DU 2	5x40mm	7x50mm		
80 x4 		75 x4 	76 x4 	85 x8 	92 x100 	120 x8 
400mm				1,4x20mm	filc	

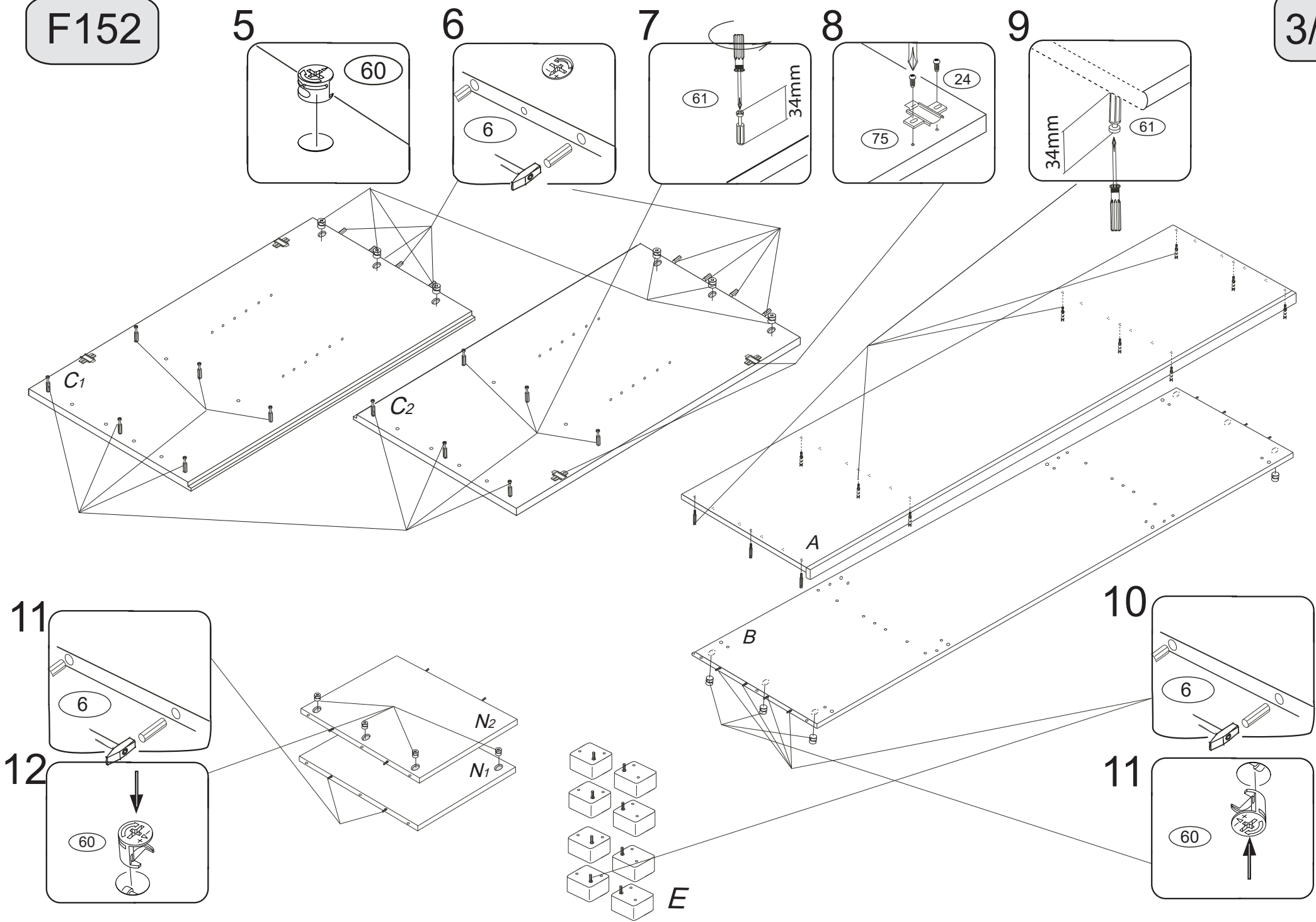
1/5

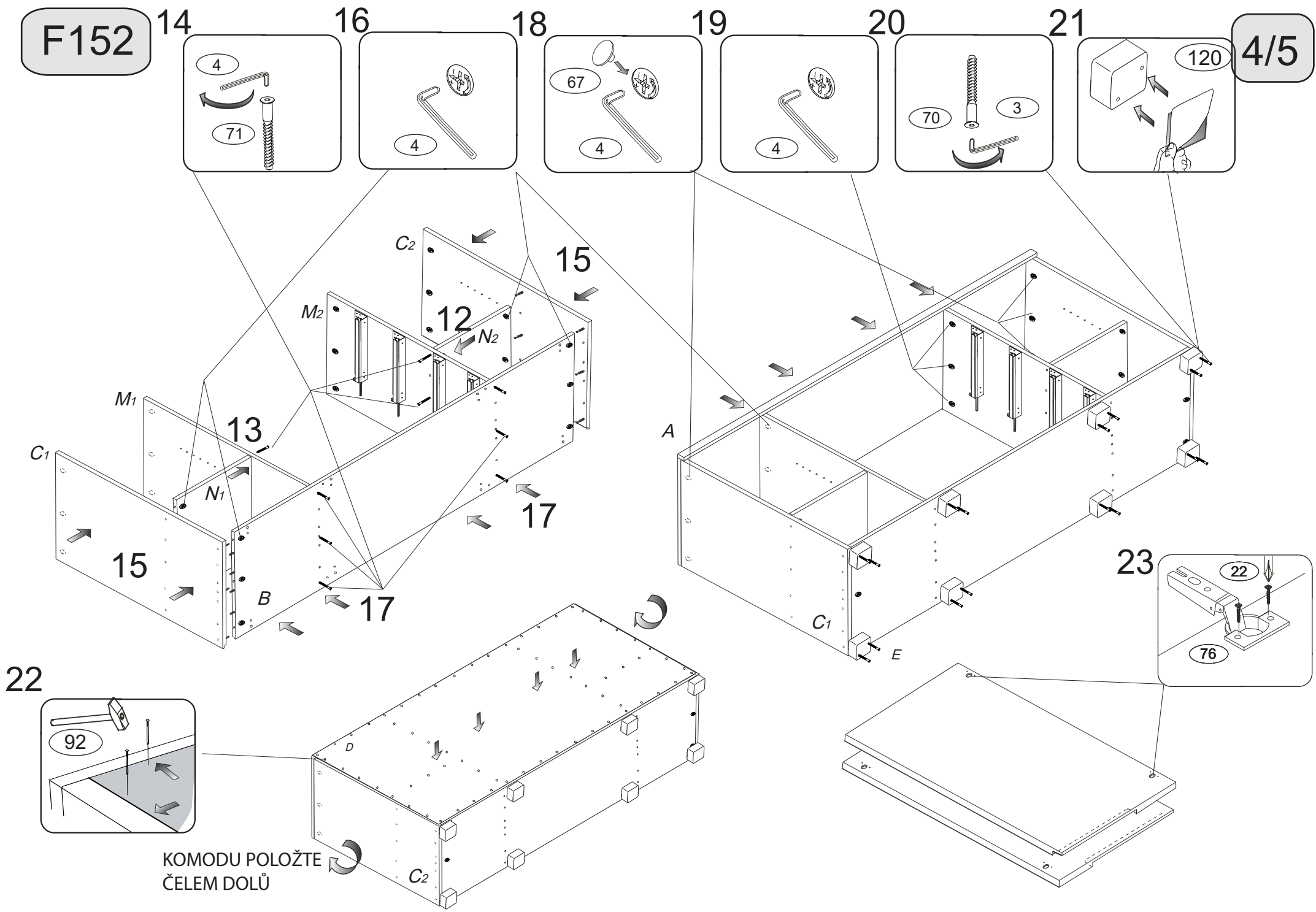


F152

2/5







F152

25

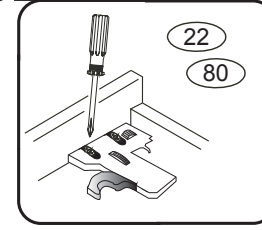
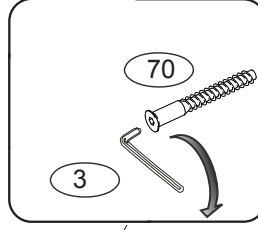
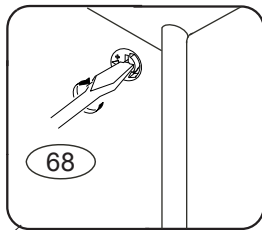
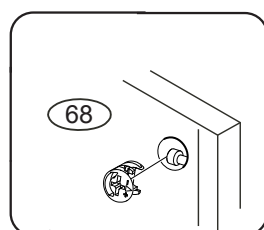
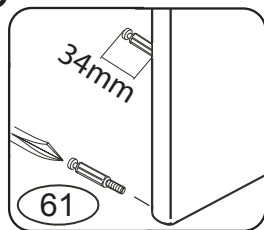
26

28

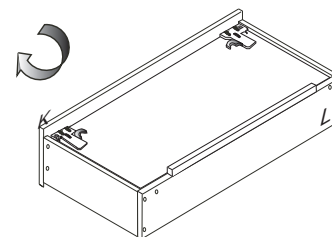
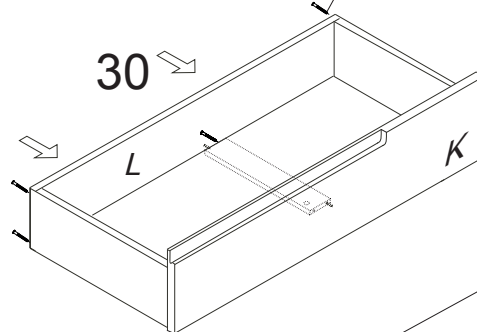
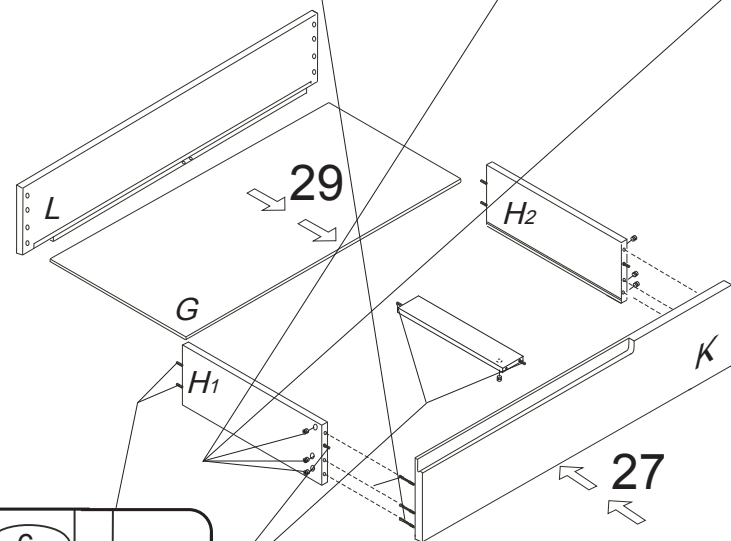
31

32

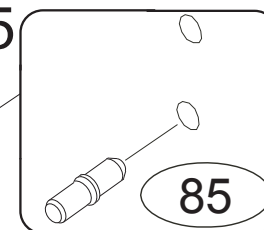
5/5



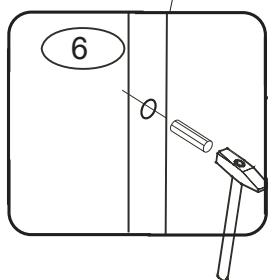
ZÁSUVKU POLOŽTE  
DNEM NAHORU



35

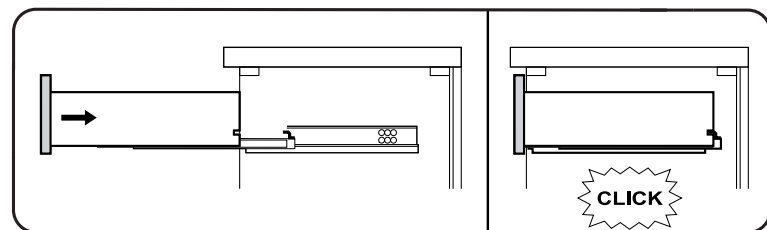


24

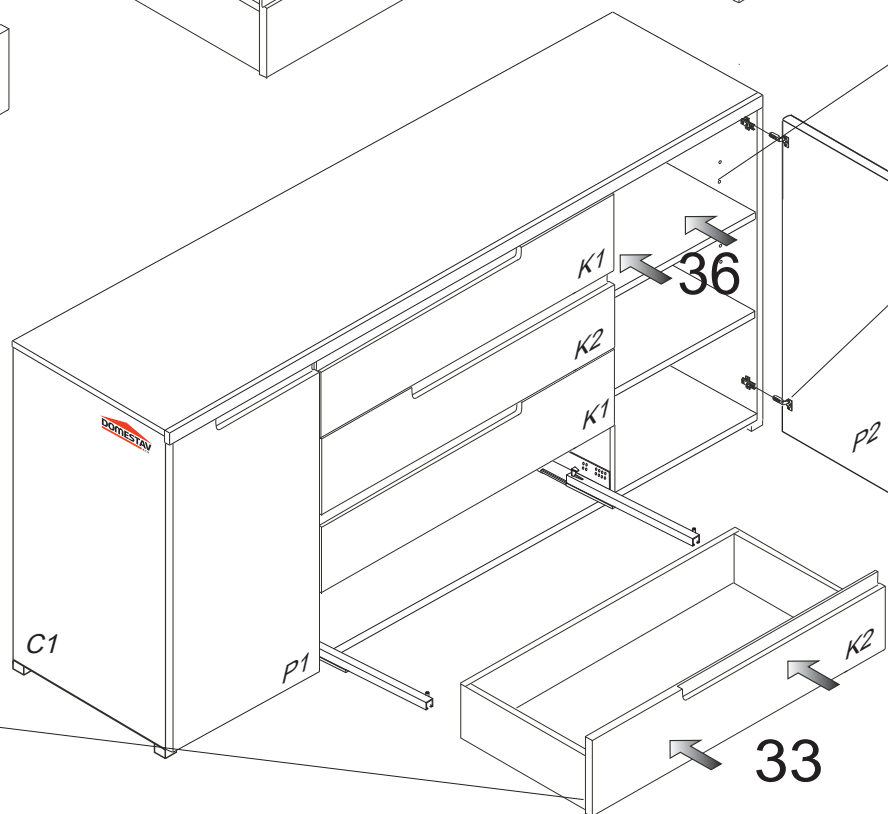


27

34



Na vysunuté pojezdy  
nasadíte zásuvky.  
Polohu zásuvek upravte  
červeným kolečkem na spojce.



37

