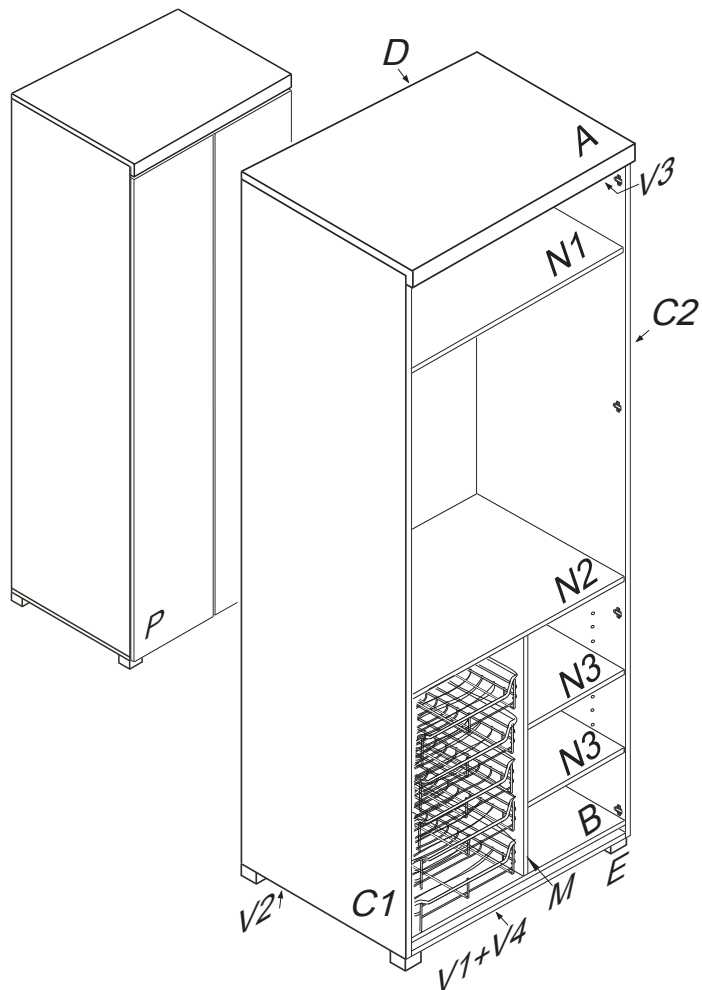


Skříň pološatní

F154

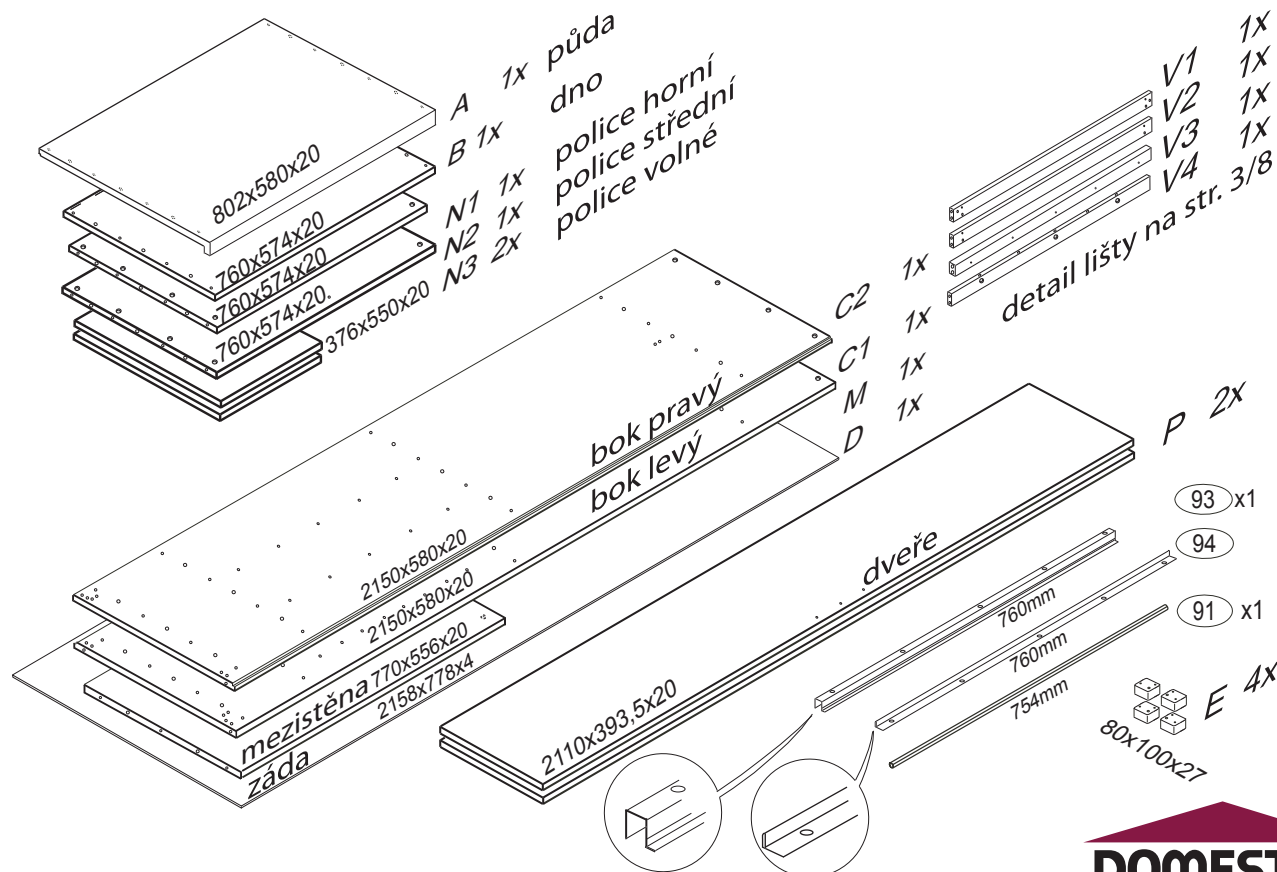
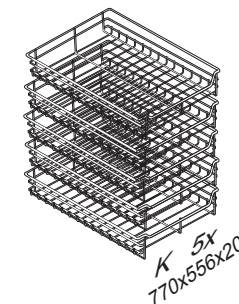
PRAVÁ

802x600x2197



1/8

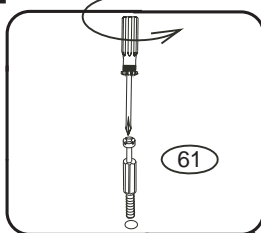
	3 x1 3mm	4 x1 4mm	6 x52 8x35mm	22 x42 3,5x16mm	43 x28 EU 6x16mm	
60 x39 15mm	61 x39 DU 2	67 x8	70 x8 5x40mm	71 x3 7x50mm	85 x12	75 x4
80 x5 quadro	89 x2	92 x50 1,4x20mm	120 x4 filc	130 x4 A B	131 x1 wing line 770	132 x1 wing line 770



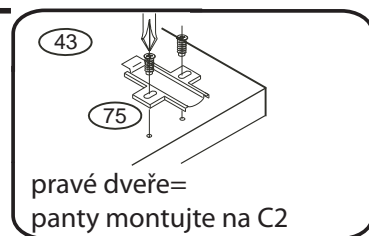
Kolíky vždy narazte nejprve do otvorů ve hranách dílců, je nutné je zarazit se stejným přesahem. V případě, že některý kolík přesahuje, je nutné jej zakrátit. Dílce srážejte kladivem pouze přes dřevěnou podložku.

F154

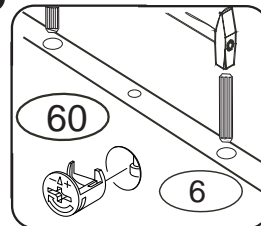
1



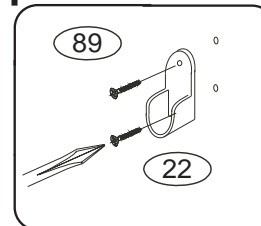
2



3

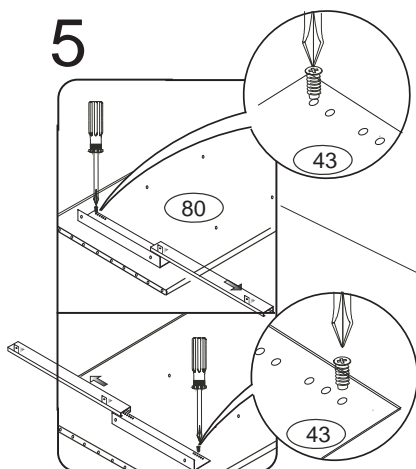


4

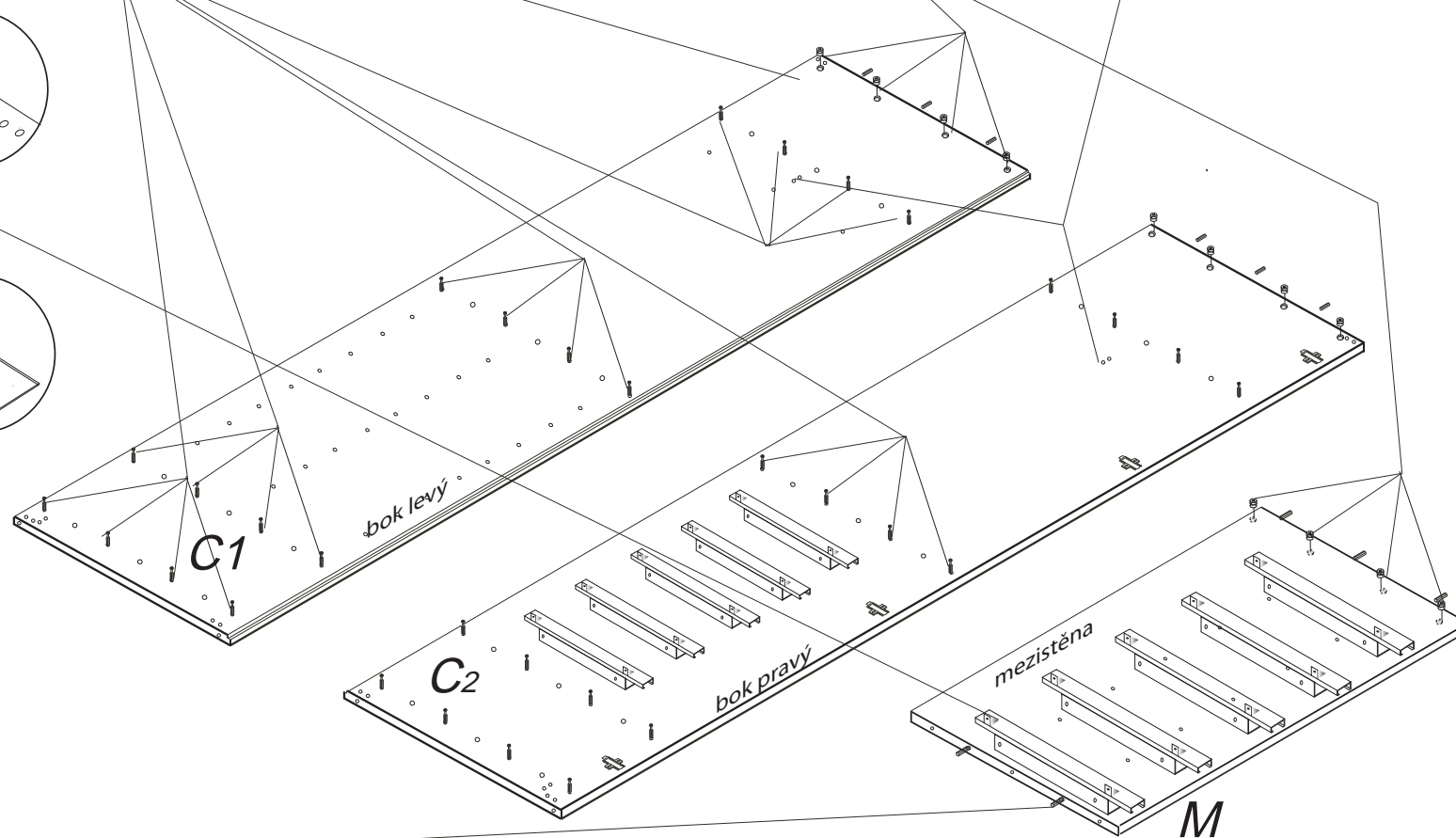
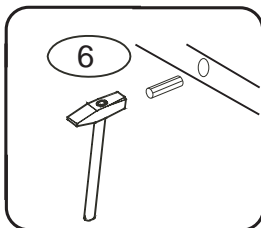


2/8

5

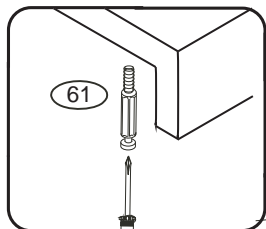


6

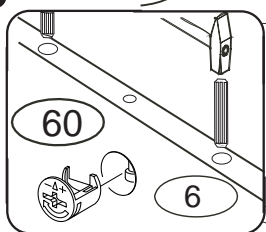


F154

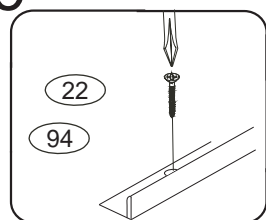
7



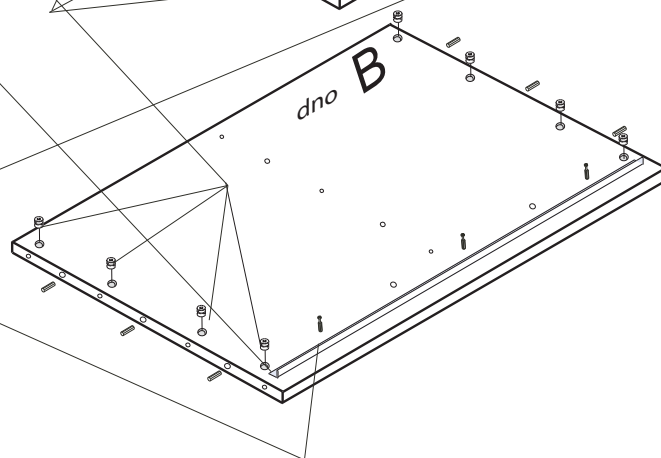
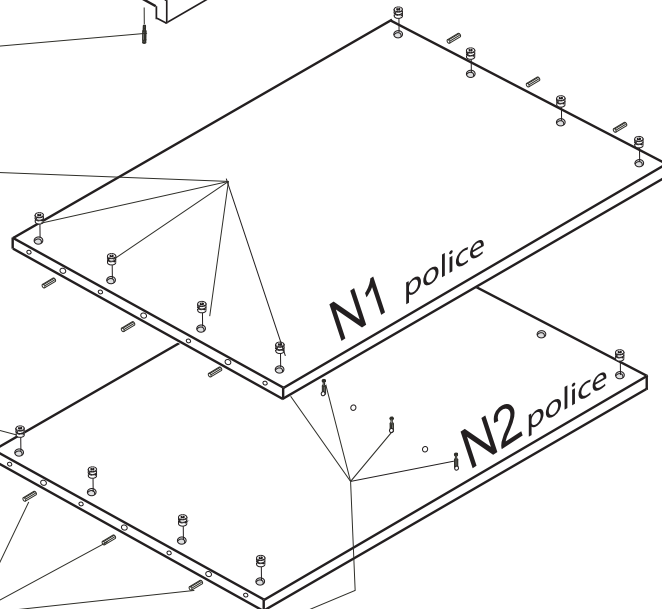
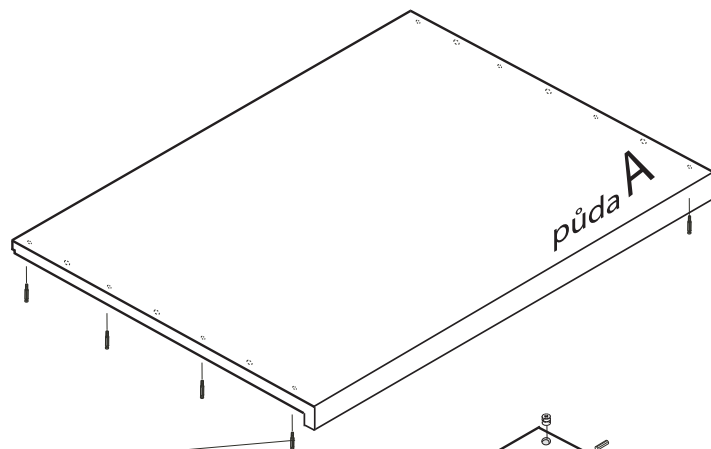
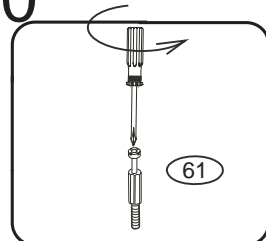
8



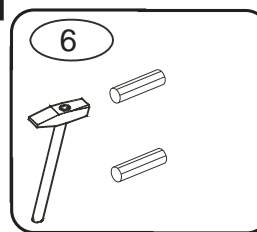
9



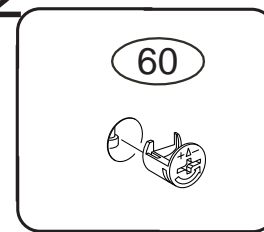
10



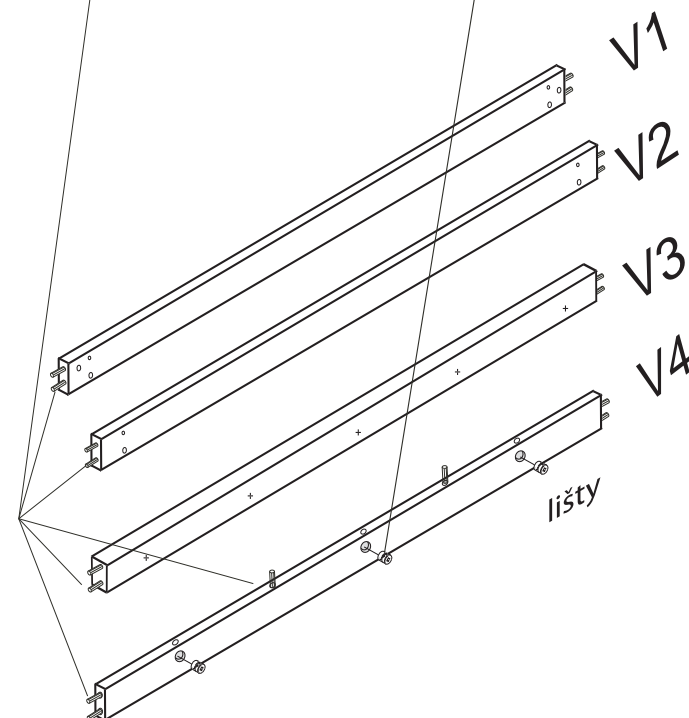
11



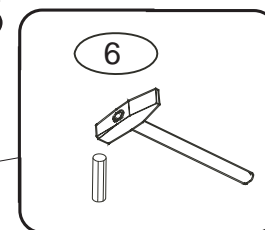
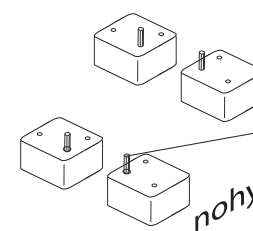
12



3/8



13



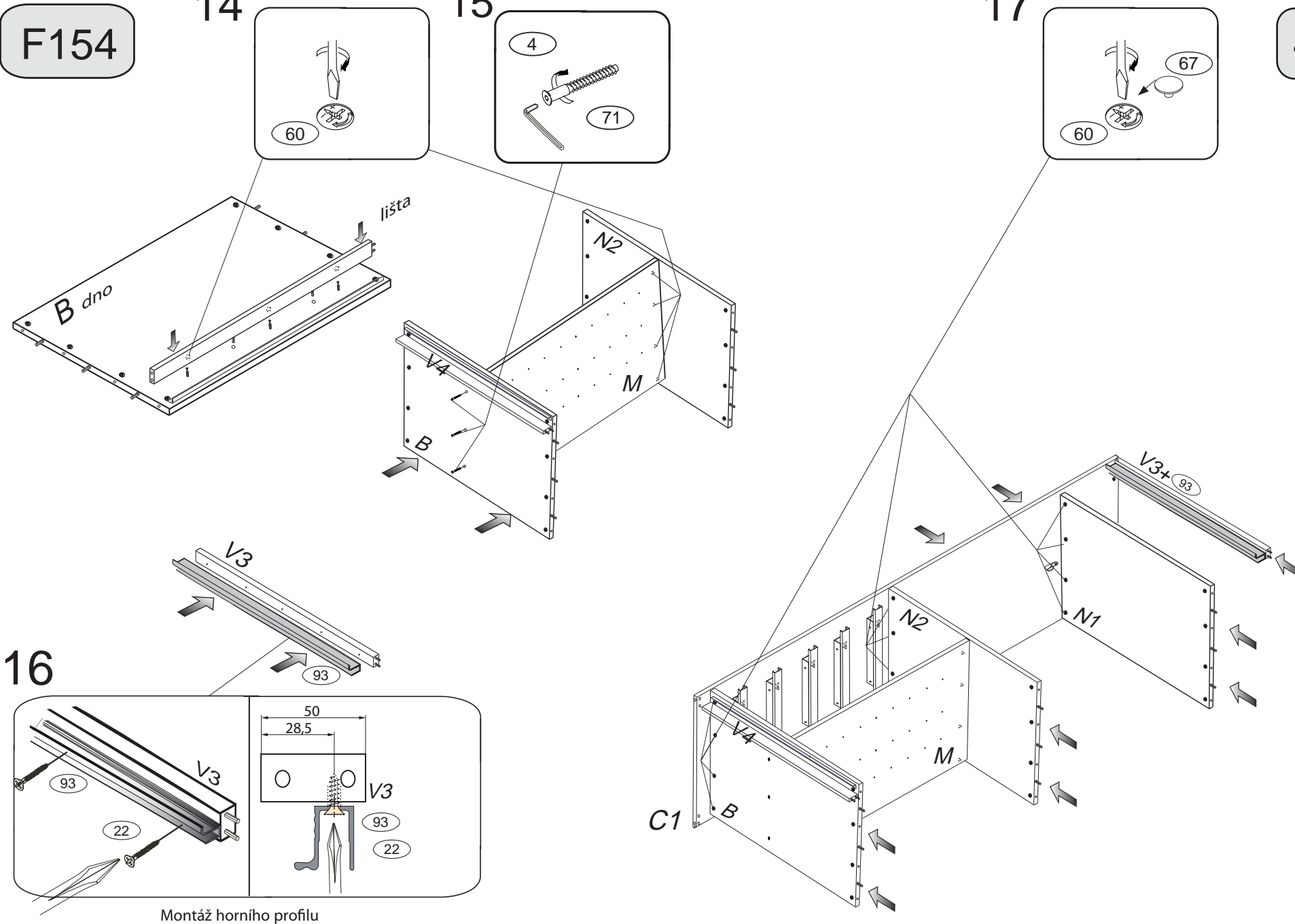
F154

14

15

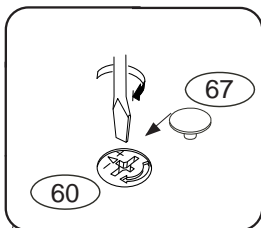
17

4/8

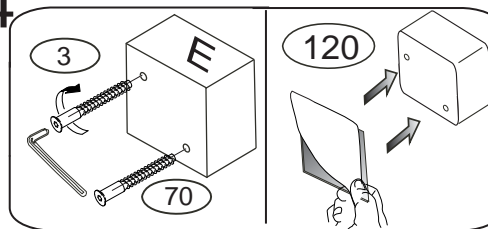


F154

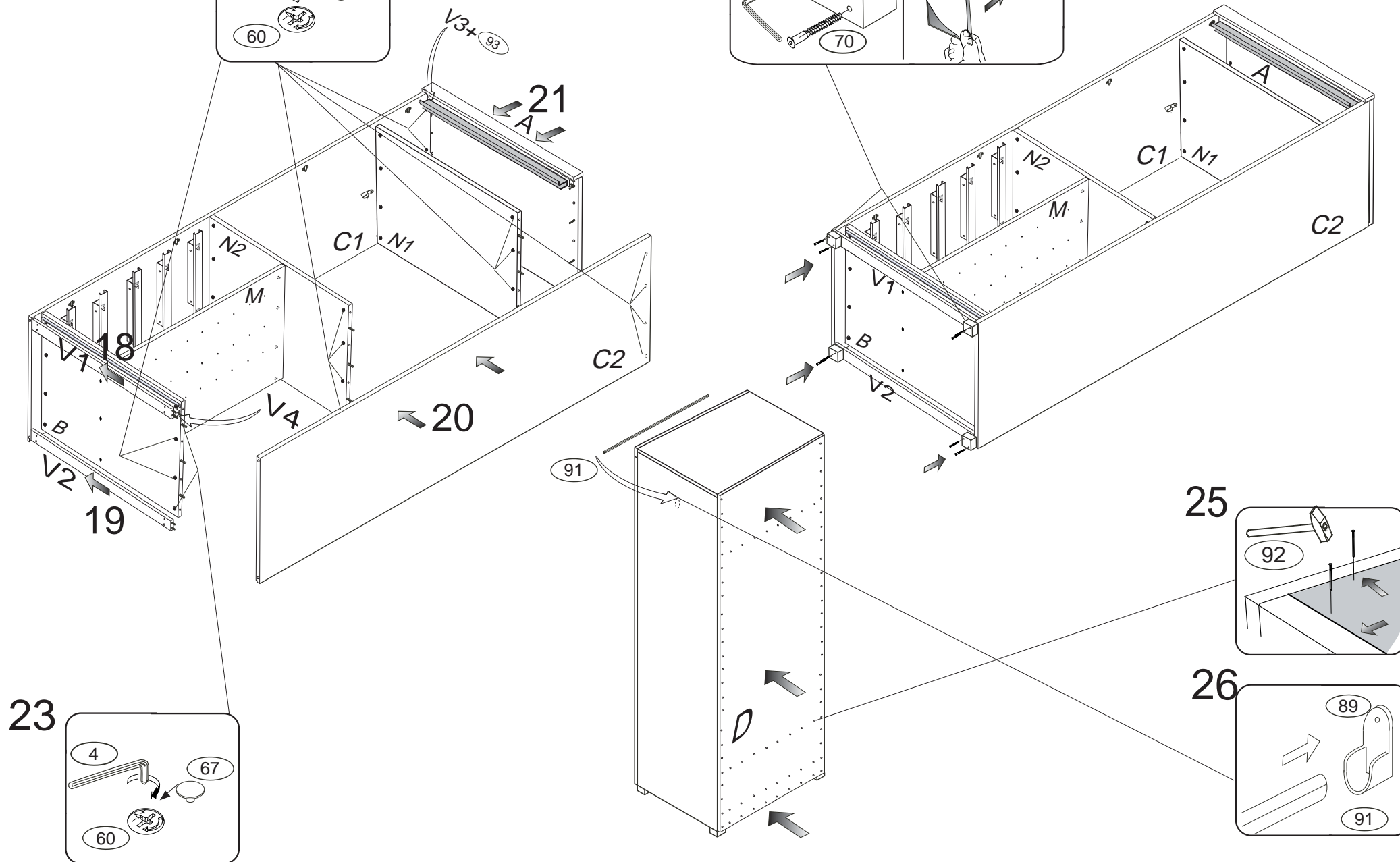
22



24

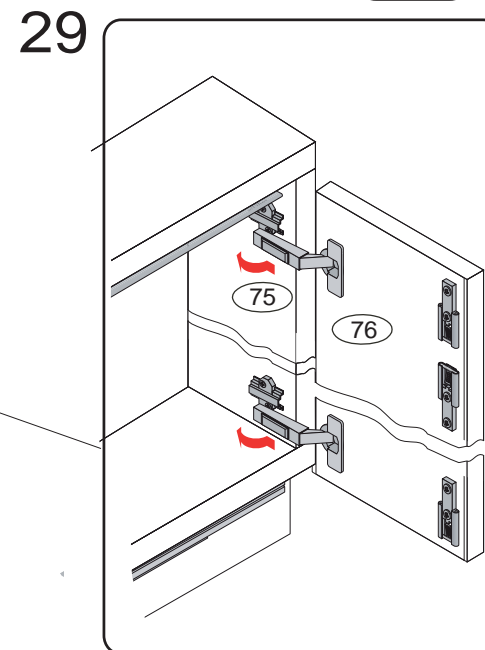
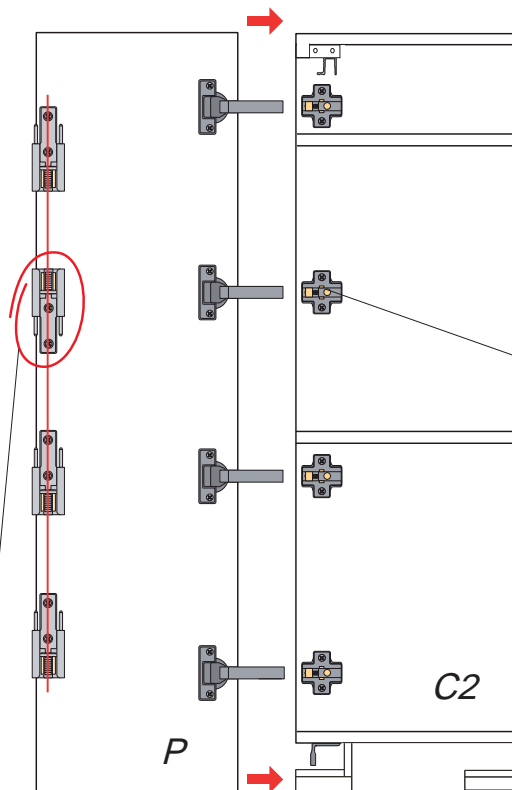
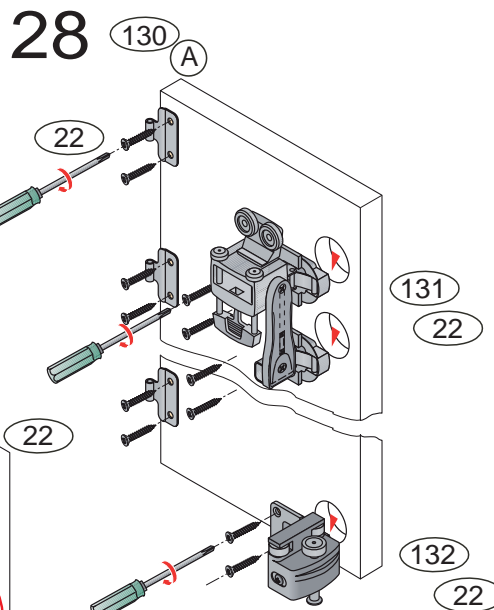
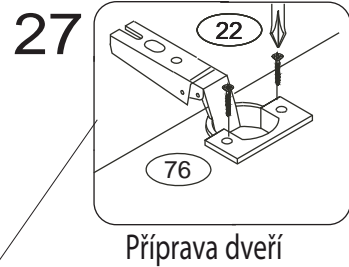


5/8

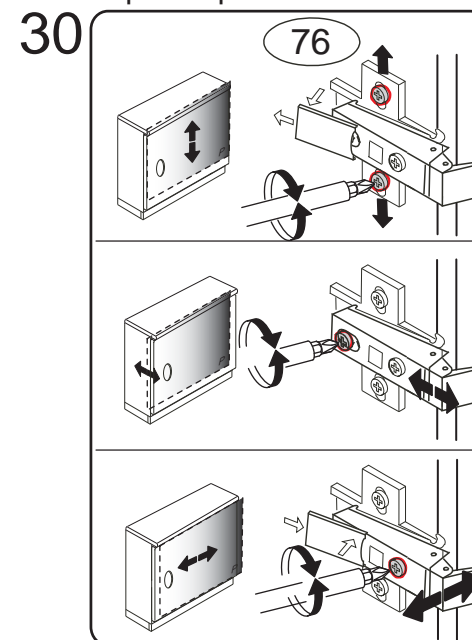


F154

MONTÁŽ KOVÁNÍ WING LINE 770

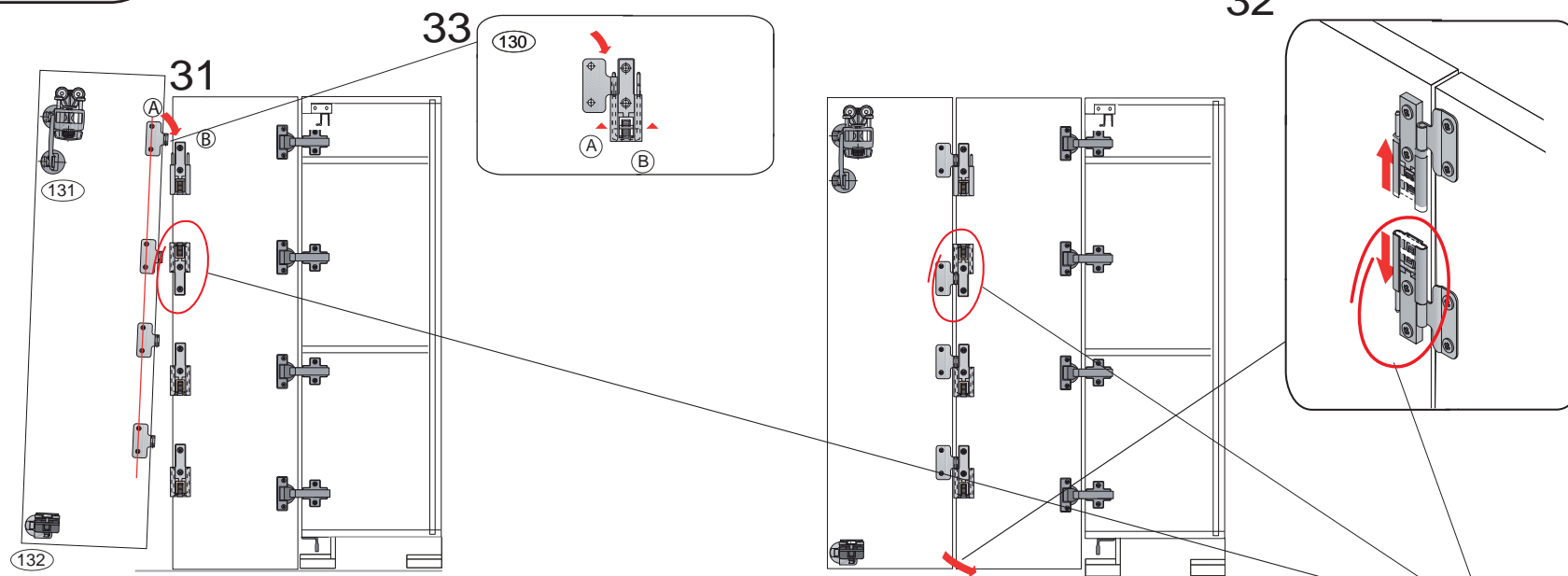


Upravte polohu dveří

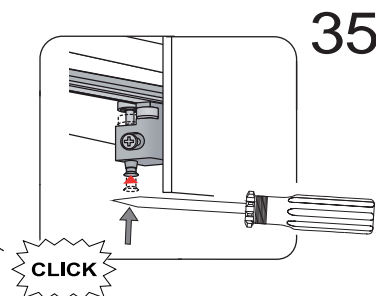
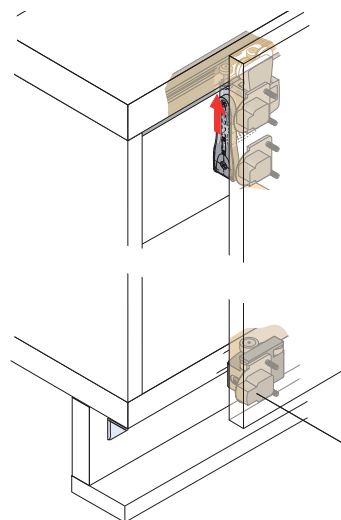
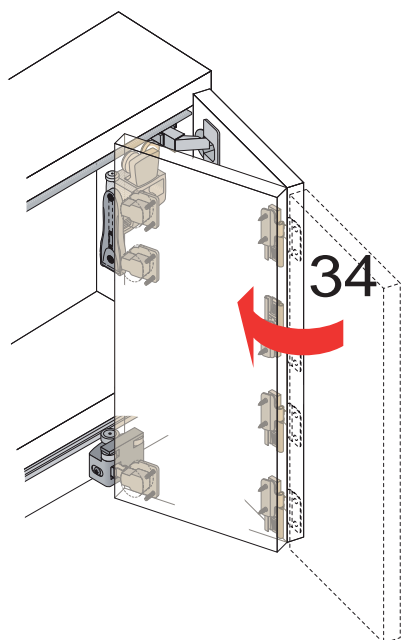


Druhý pant shora při montáži
otočte o 180°.
Zajišťuje dveře proti vypadávání.

6/8



! Druhý pant shora je namontován opačně.
Zajišťuje dveře proti vypadávání.



F154

8/8

