

802x600x2197

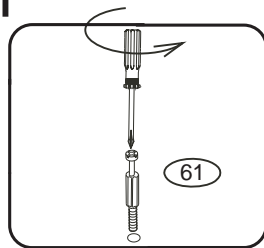


Kolíky vždy narazte nejprve do otvorů ve hranách dílců, je nutné je zarazit se stejným přesahem. V případě, že některý kolík přesahuje, je nutné jej zakrátit. Dílce srážejte kladivem pouze přes dřevěnou podložku.

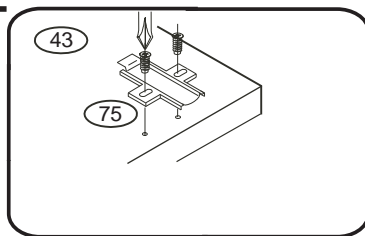
1/7

F155

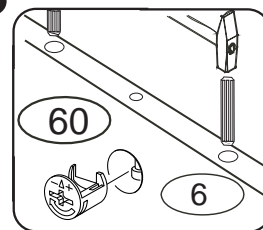
1



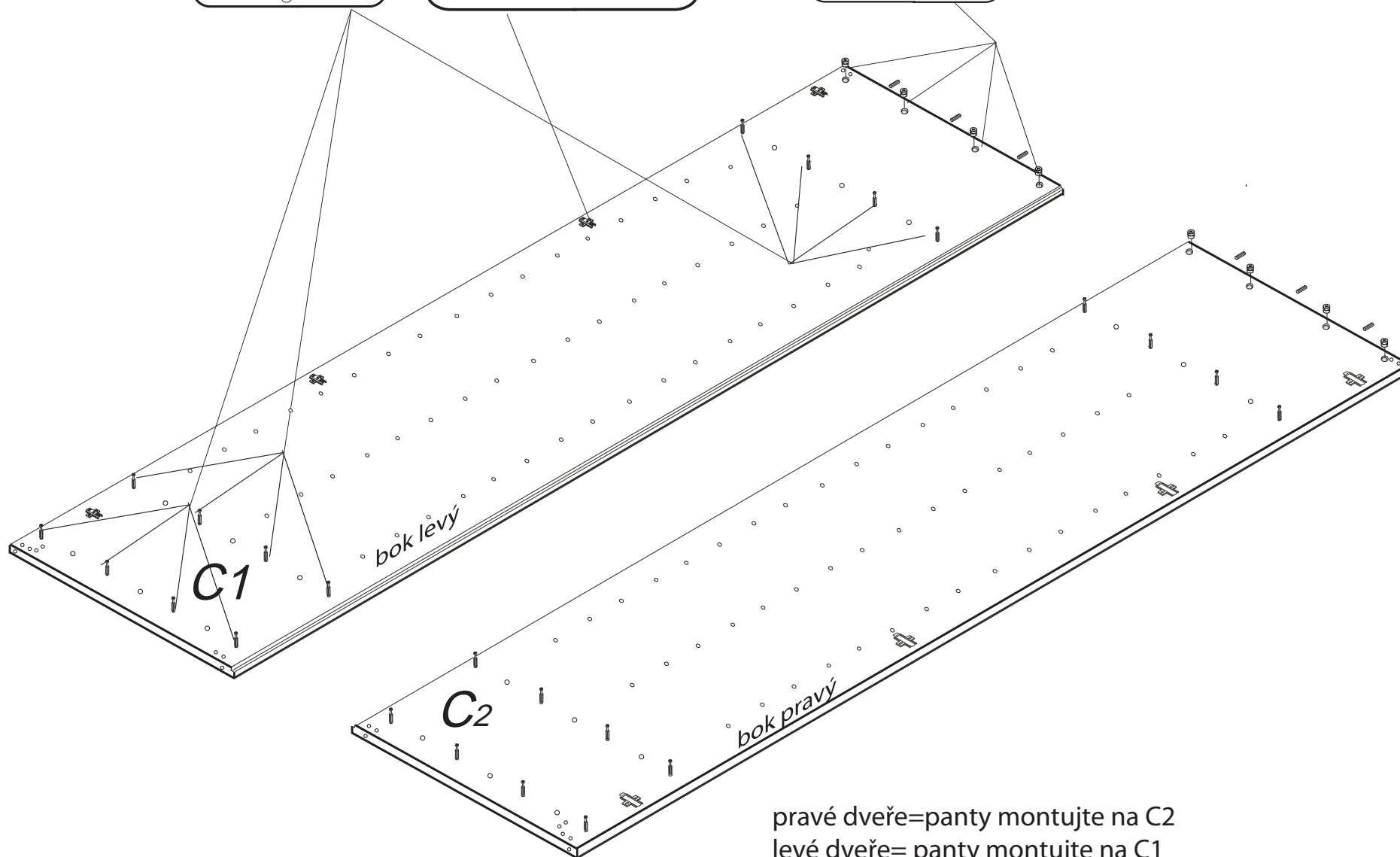
2



3

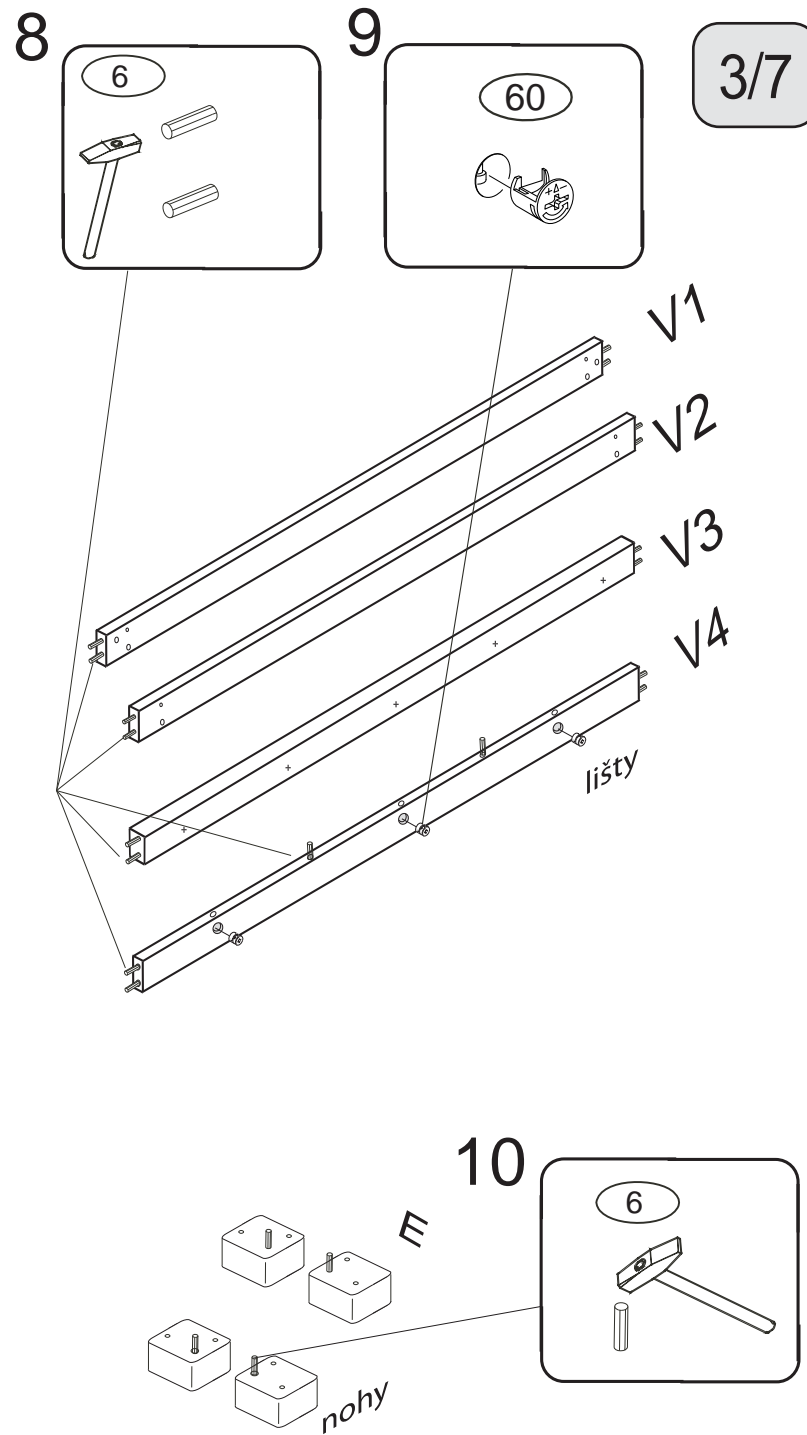
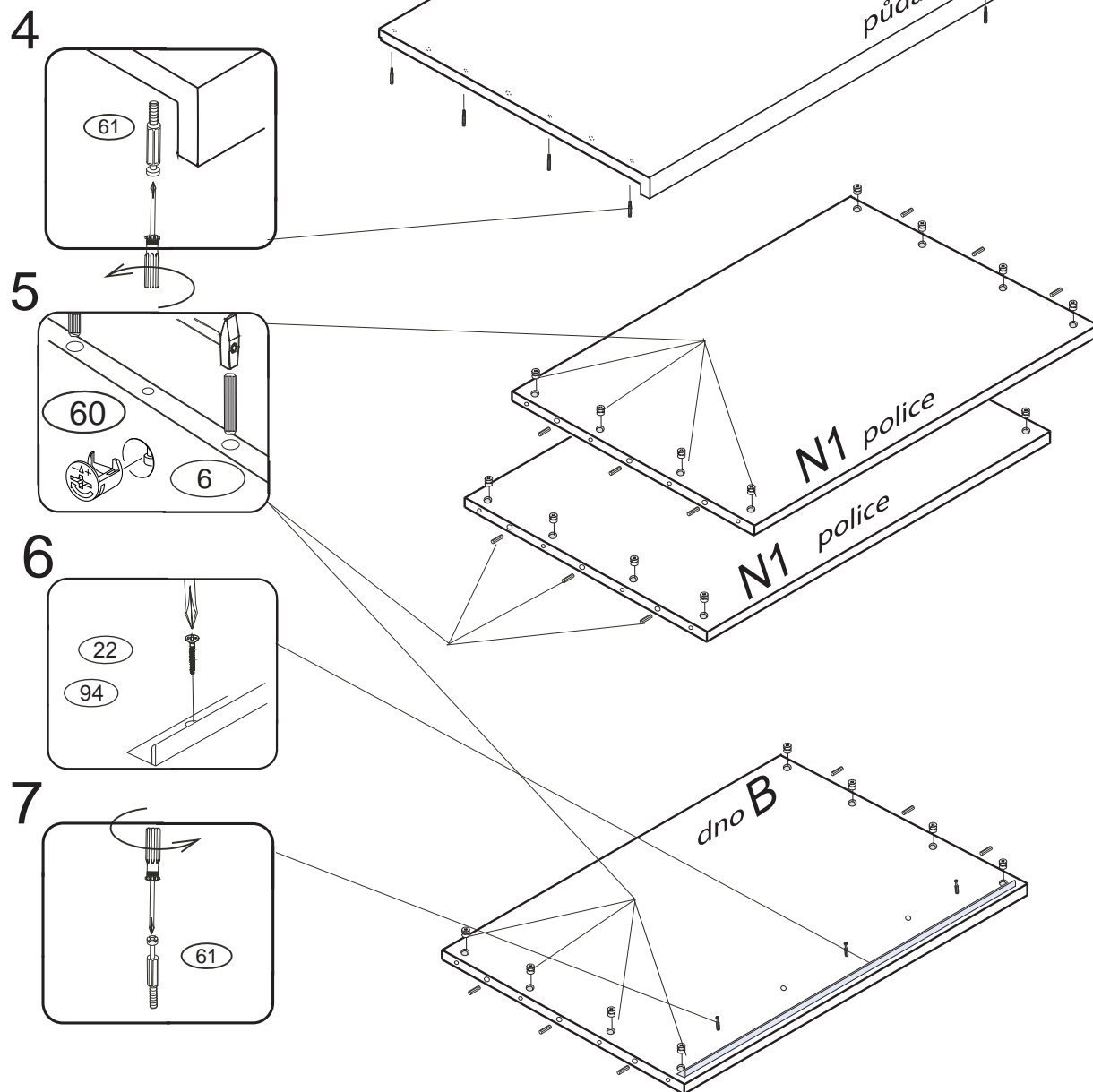


2/7

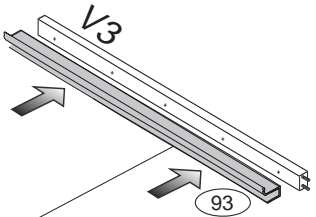
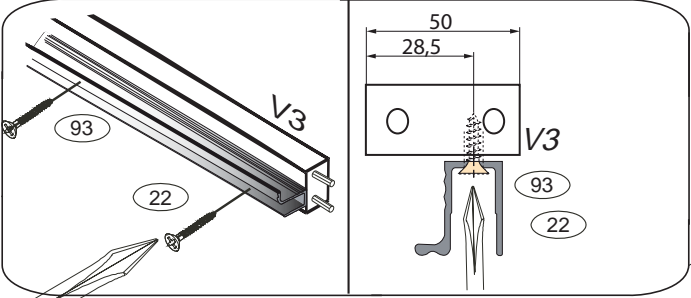
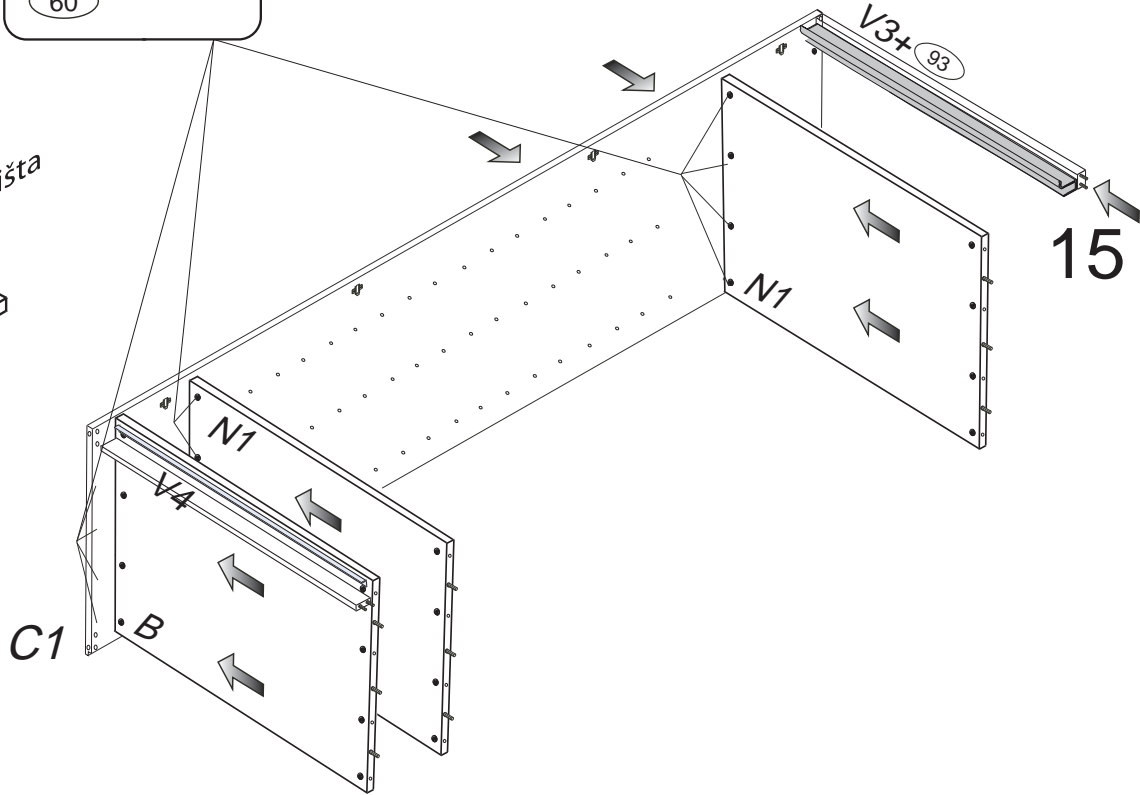
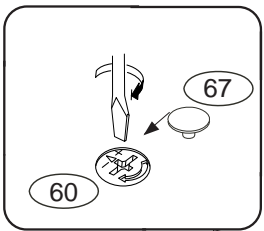
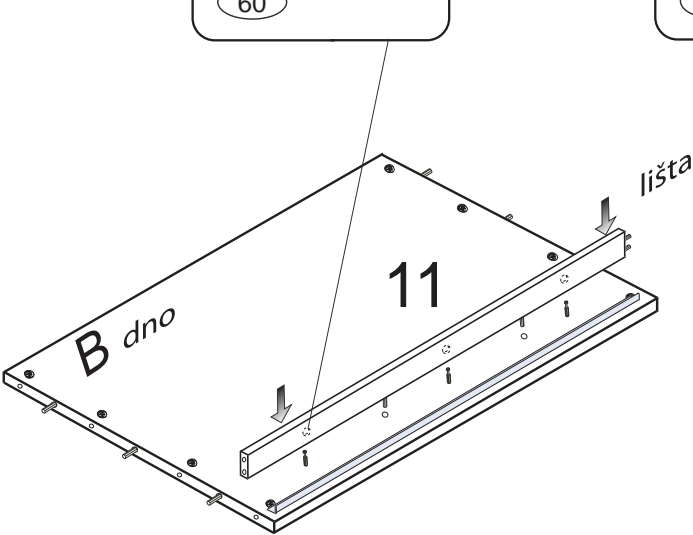


pravé dveře=panty montujte na C2
levé dveře= panty montujte na C1

F155



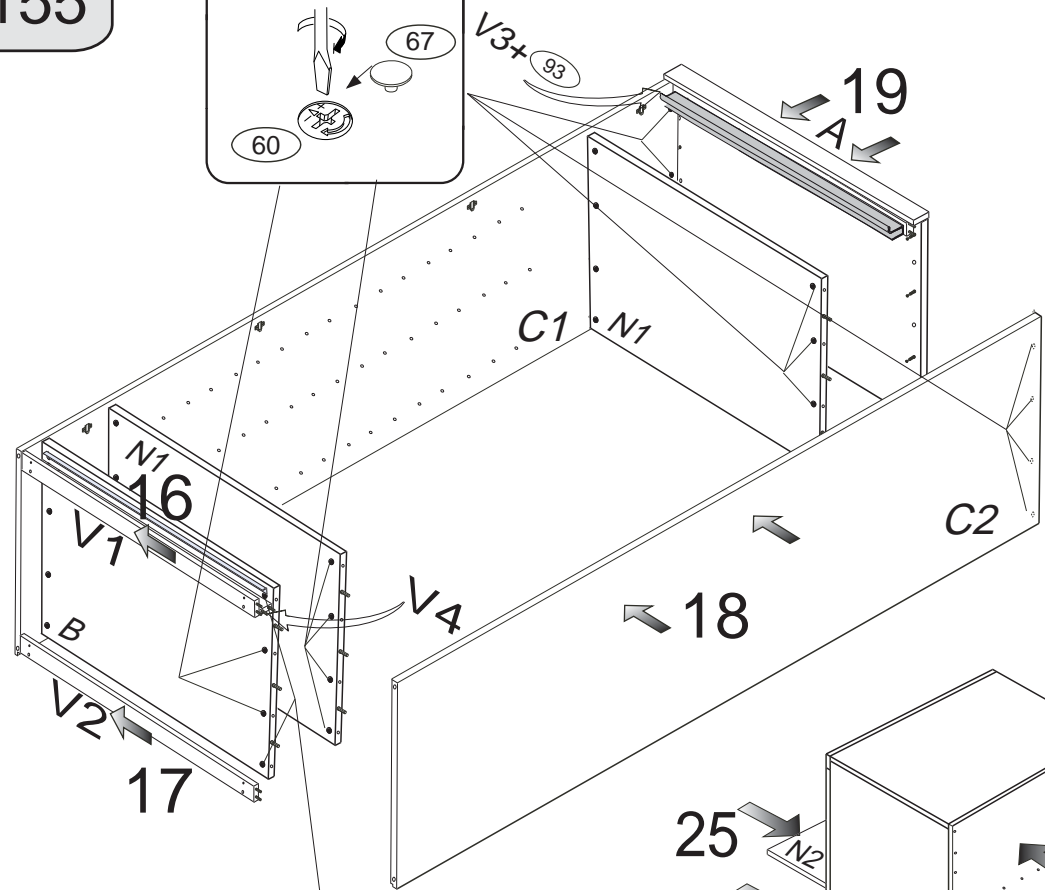
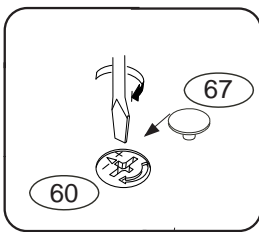
3/7



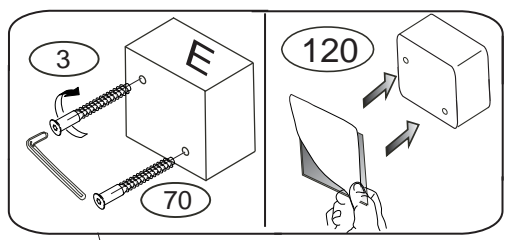
Montáž horního profilu

F155

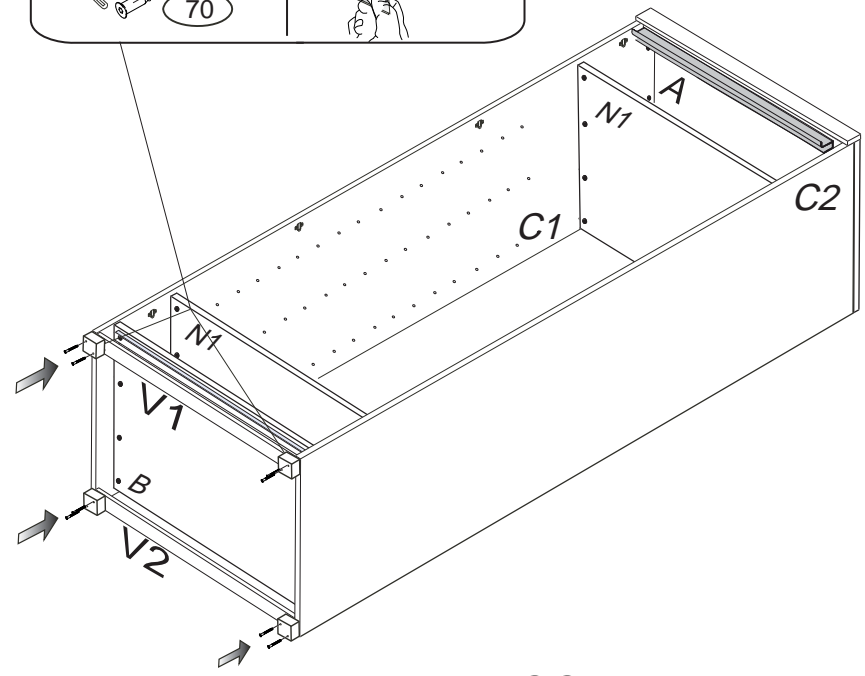
20



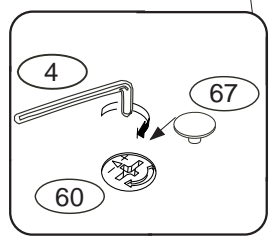
21



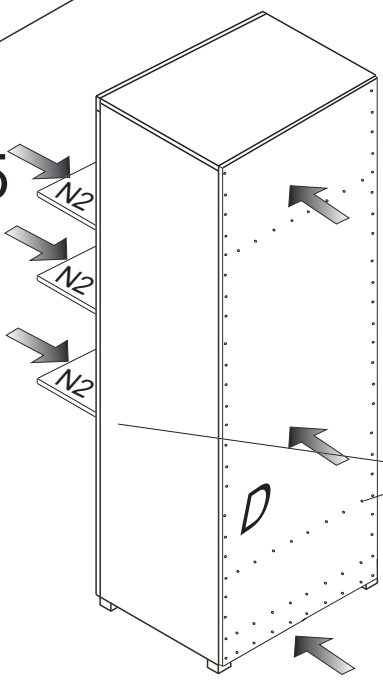
5/7



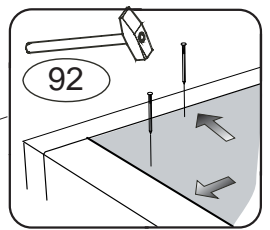
23



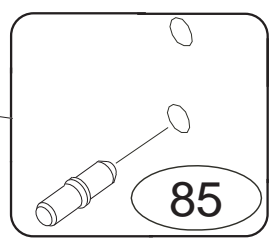
25



22



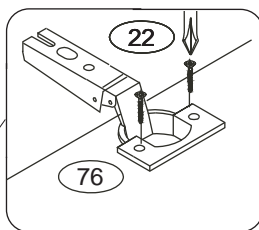
24



F155

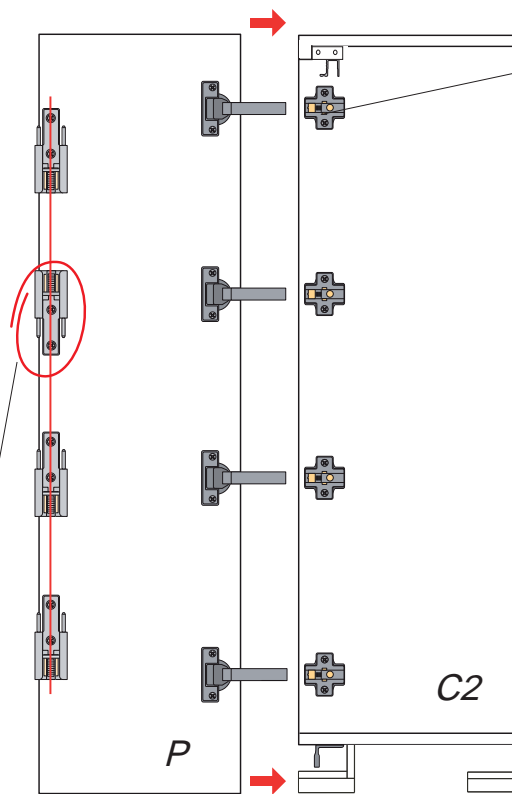
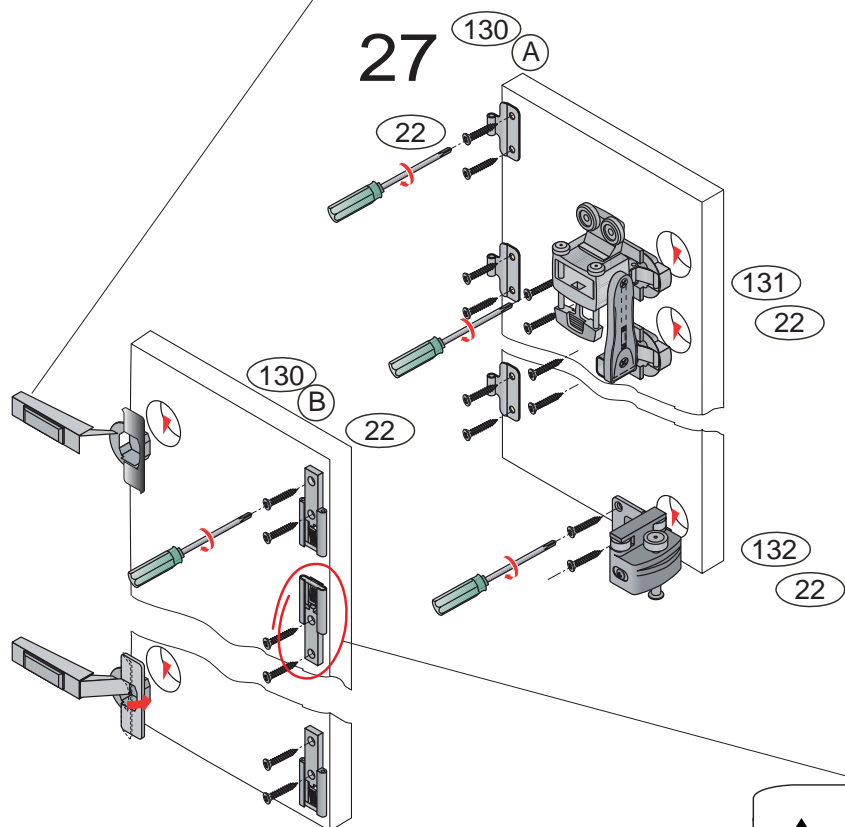
MONTÁŽ KOVÁNÍ WING LINE 770

26

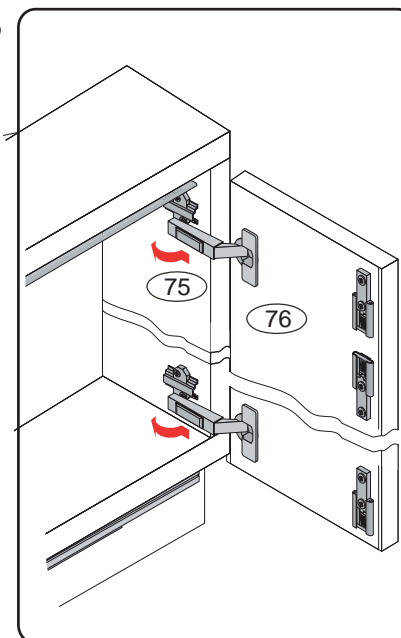


Příprava dveří

27

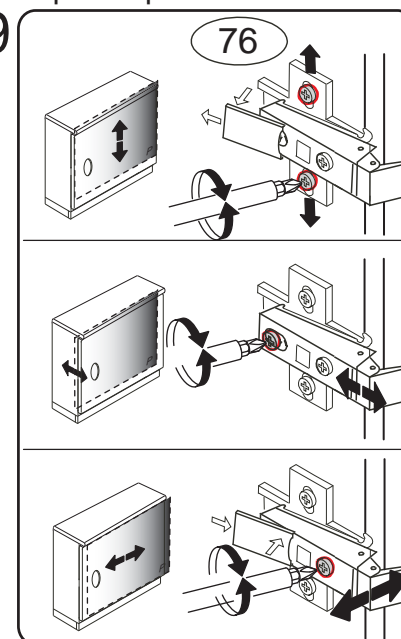


28



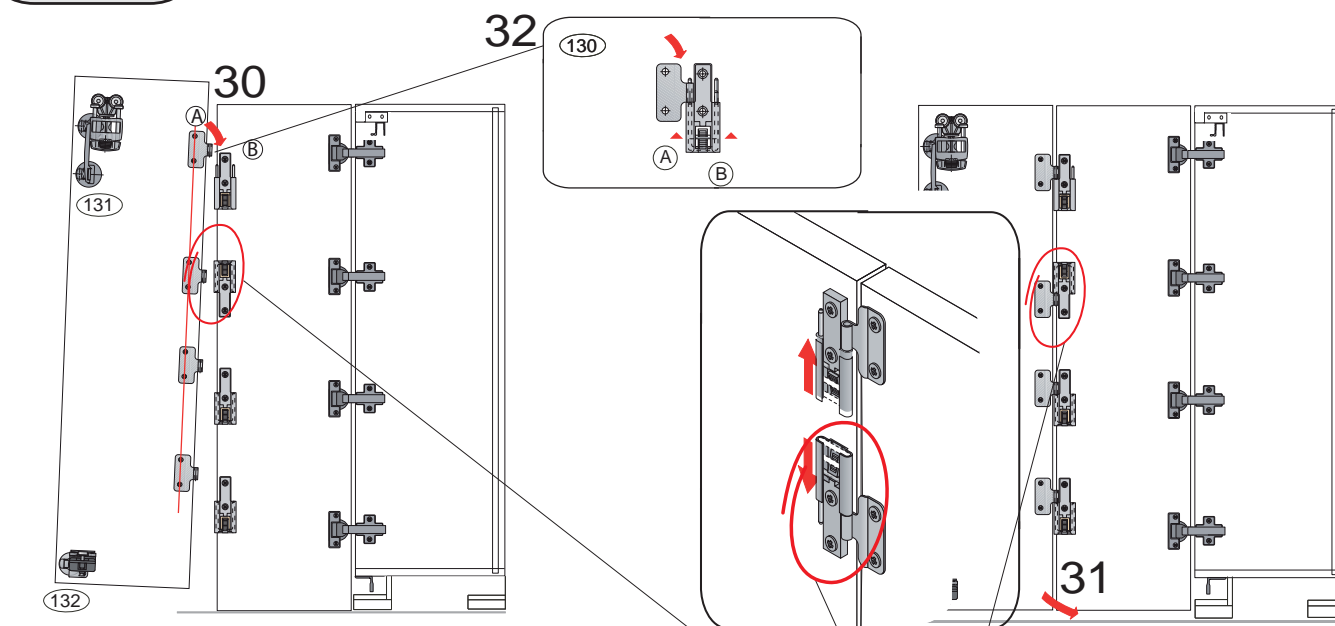
Upravte polohu dveří

29

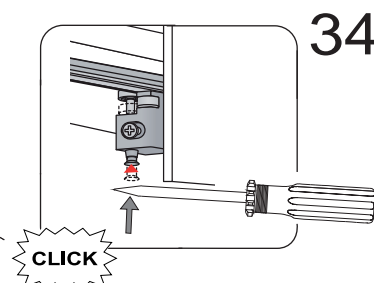
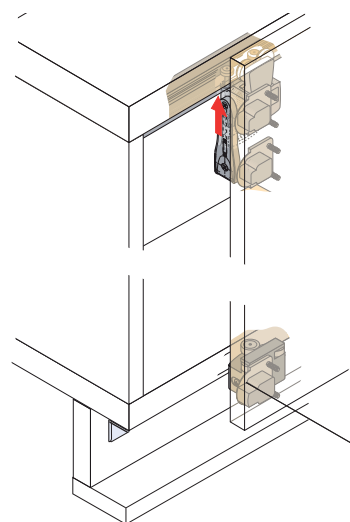
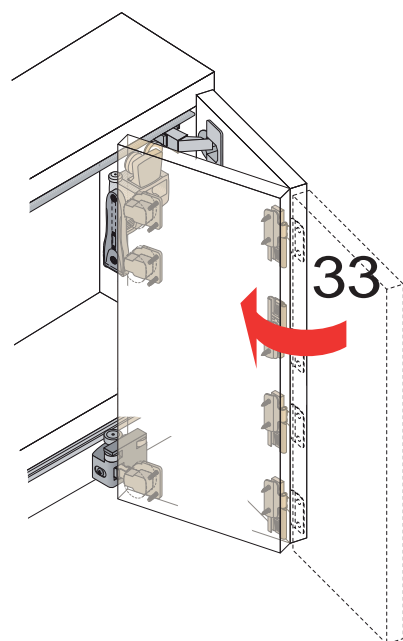


Druhý pant shora při montáži
otočte o 180°.
Zajišťuje dveře proti vypadávání.

6/7



! Druhý pant shora je namontován opačně. Zajišťuje dveře proti vypadávání.



35
Upravte polohu dveří

